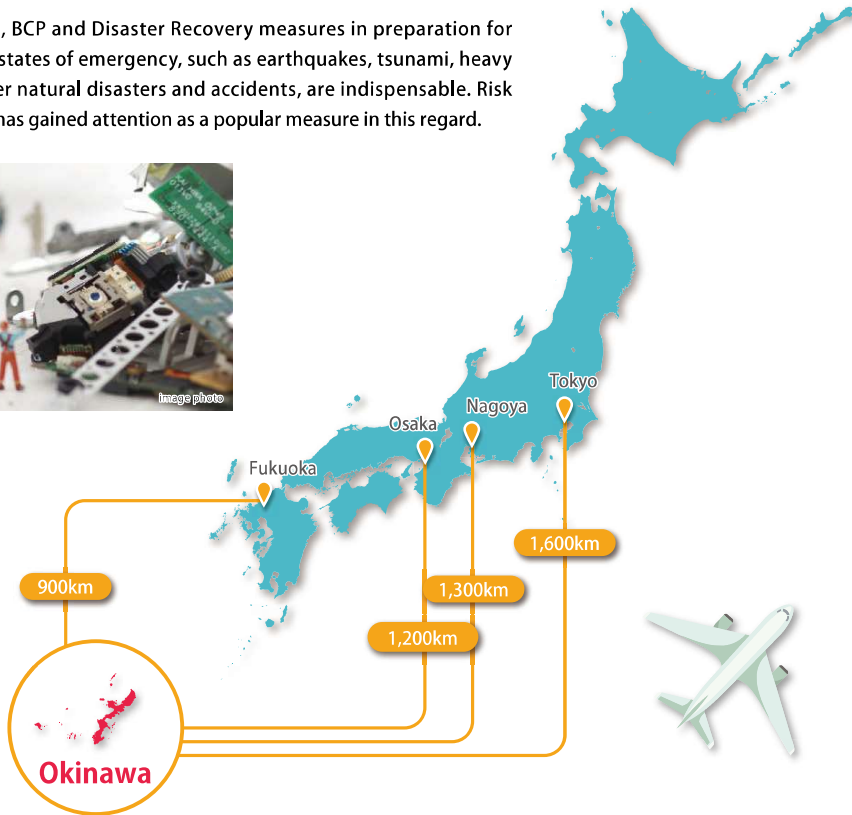


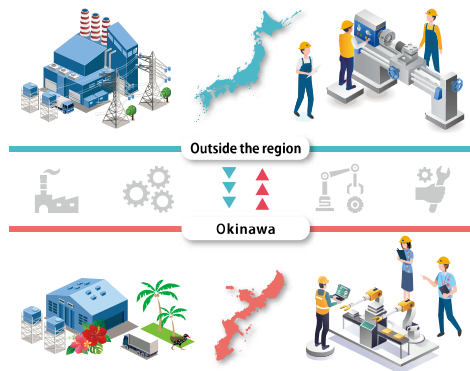
1 Geographic Features of Okinawa

In recent years, BCP and Disaster Recovery measures in preparation for unpredictable states of emergency, such as earthquakes, tsunami, heavy snow, and other natural disasters and accidents, are indispensable. Risk Diversification has gained attention as a popular measure in this regard.



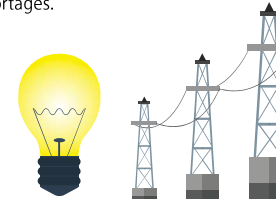
Point 1 Distant From the Mainland, There Is a Low Risk of Simultaneous Disaster Occurrence

Due to its remote location, far from the mainland, Okinawa is considered to have a relatively low risk of simultaneous disaster occurrence in the event of a large-scale disaster on the mainland. Some companies have actually moved their bases of operations to Okinawa, or placed a base for data backup and BCP measures here, after large scale disasters. The government also sees Okinawa as a valuable base for risk diversification, with some government offices adopting Okinawa as the place for their data backup centers. Okinawa's proximity to the mainland also has the advantage of speeding up disaster recovery. Okinawa is an ideal location for disaster countermeasure system backups and dual centers (operation centers that operate simultaneously).



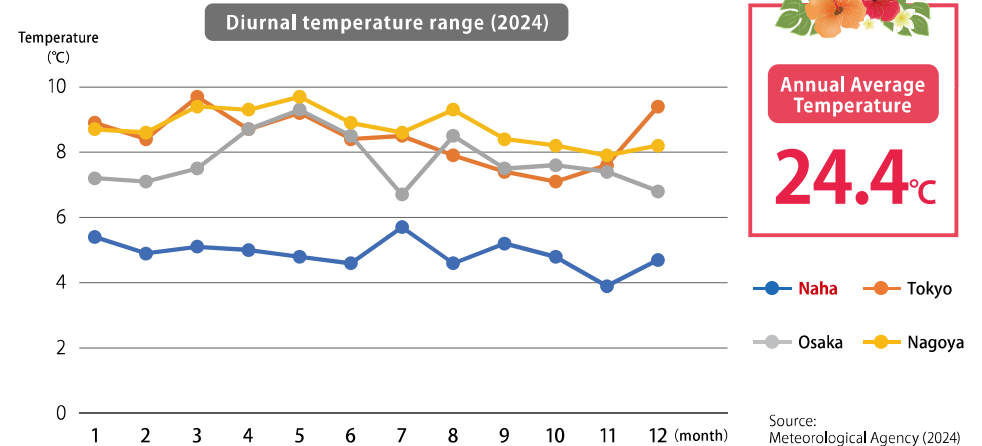
Point 2 Power Distribution System Independent From the Mainland

Okinawa has stable power distribution based in thermal power generation which is independent from the Japanese mainland. This makes favorable conditions for mitigating and diversifying the risk of halted operations or data loss due to power shortages.



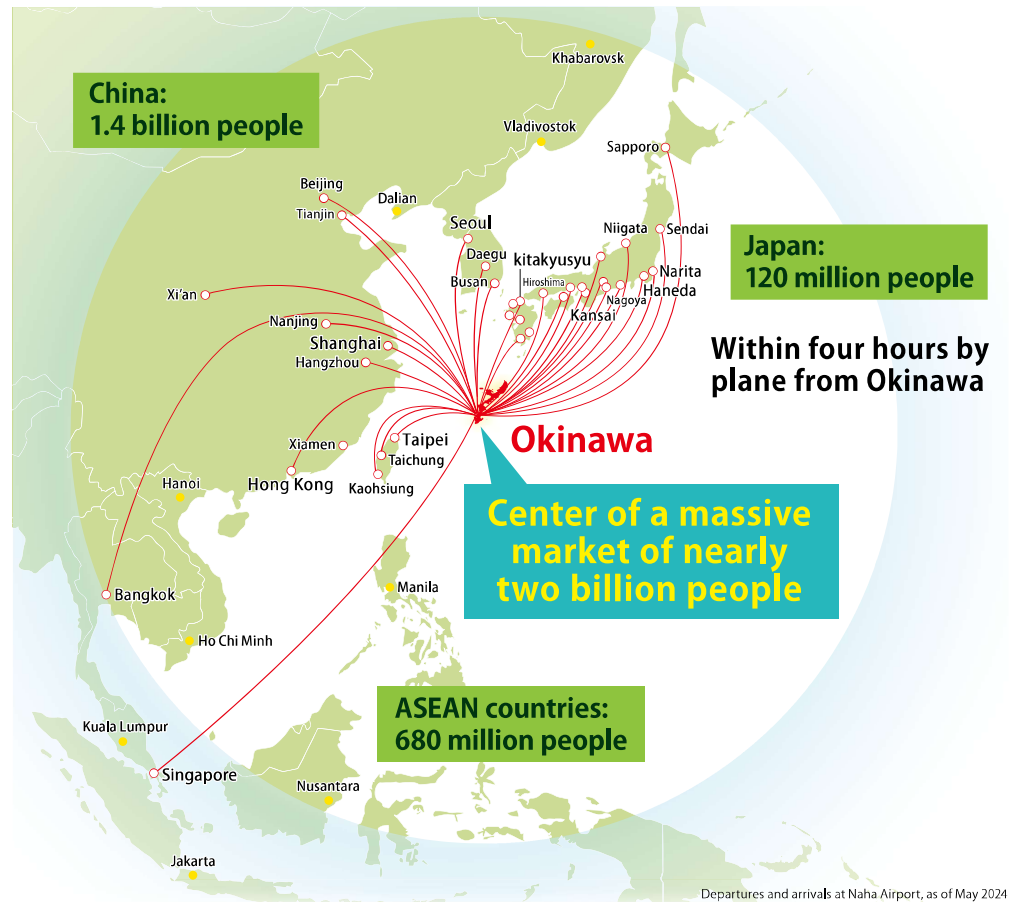
Point 3 Consistent, Comfortable Climate!

Okinawa Prefecture is the only subtropical region in Japan and has a mild climate year-round which generally has no snowfall. For example, the required environmental temperature for a clean room in semiconductor manufacturing is said to be 23 degrees Celsius, which is near the average temperature for Okinawa. Temperature fluctuations throughout the day are markedly smaller here than in other prefectures as well, and this adds the benefit of making it possible to reduce the costs of maintaining a constant temperature. In this way, a climate with small temperature differences is another unique advantage of being located in Okinawa.



Distribution Networks Connecting People and Goods Across Asia

With a geographical advantage located at the heart of East Asia, Okinawa beats with energy and has been garnering attention as a vital business hub interlocked with the Asian economy. In order to develop Okinawa as an international business city connecting Japan and Asia, Okinawa Prefecture is working on building an international logistics network centered around Naha Airport and Naha Port, Okinawa's sky and sea gateways. This distribution hub will be excellent for companies looking to expand in Asia.



International flights

Taipei	60flights/week	Beijing	2flights/week
Required Travel Time 1:25 (1,640km)		Required Travel Time 2:40 (1,852km)	
Kaohsiung	10flights/week	Shanghai	18flights/week
Required Travel Time 1:45 (1,843km)		Required Travel Time 2:00 (1,806km)	
Seoul	35flights/week	Bangkok	4flights/week
Required Travel Time 2:20 (1,260km)		Required Travel Time 4:40 (3,130km)	
Busan	7flights/week	(via Taipei)	
Required Travel Time 2:15 (1,008km)		Kuala Lumpur	4flights/week
Hong Kong	21flights/week	Required Travel Time 7:30 (3,800km)	
Required Travel Time 2:35 (1,440km)		Singapore	3flights/week
		Required Travel Time 5:10 (3,760km)	

Domestic flights

Tokyo	42flights/day	Haneda	36flights/day
Required Travel Time 2:20 (1,687km)		Narita	6flights/day
Nagoya	12flights/day		
Required Travel Time 2:05 (1,483km)			
Kansai	26flights/day	Kansai	13flights/day
Required Travel Time 1:50 (1,261km)		Itami	5flights/day
Fukuoka	23flights/day	Kobe	8flights/day
Required Travel Time 1:30 (1,008km)			
Kagoshima	2flights/day		
Required Travel Time 1:15 (758km)			

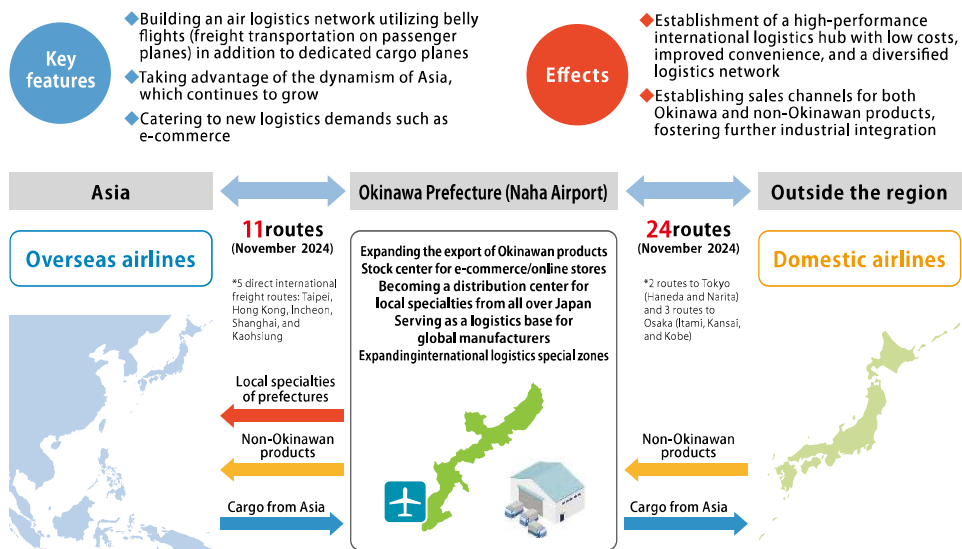
- 1flight/day
- Shin Chitose
 - Sendai
 - Niigata
 - Ibaraki
 - Komatsu
 - Shizuoka
 - Okayama
 - Hiroshima
 - Iwakuni
 - Matsuyama
 - Takamatsu
 - Miyazaki
 - Kumamoto
 - Amami Island
 - Yoron Island
 - Okinoerabu

*5 flights/week between Seoul and Shimajiri Island (Miyakojima City) are also available.
*The time required is an estimate from Naha Airport to each destination.

Naha Airport: An airport that connects major cities in Japan and Asia

With its extensive network of flights connecting various parts of Japan with major cities in Asia, all within about four hours, Naha Airport has a strong strategic advantage as an international air logistics hub. To establish an international logistics hub, Okinawa Prefecture is promoting a transportation model that utilizes the cargo space of passenger flights operating out of Naha Airport, in addition to the use of cargo planes. In response to the rapidly expanding e-commerce market, which demands high-frequency shipments to multiple destinations, we are working to expand this model and increase its visibility. At the same time, we are strengthening and expanding the international air logistics network by enhancing our logistics functions.

Okinawa International Logistics Hub



Operation of Domestic Cargo Planes

On April 11, 2024, domestic cargo flight operations began at five airports in Japan, including Naha. These flights use aircraft introduced by the Yamato Group and operated by the JAL Group. At Naha Airport, a once daily one-way flight operates from Narita Airport to Naha Airport, and another operates from Naha Airport to Kitakyushu Airport. Additionally, at Kitakyushu Airport, connecting flights link both Narita Airport and Haneda Airport.

- Departs Narita Airport at 6:00 and arrives at Naha Airport at 9:00
- Departs Naha Airport at 15:45 and arrives at Kitakyushu Airport at 17:30 (as of December 2024)



The 13th Great Okinawa Trade Fair 2025

- Face-to-Face Business Introductions**
[Date] Thursday, November 20 & Friday, November 21, 2025
[Venue] Okinawa Convention Center
- Online Business Introductions**
[Date] Friday, August 1 & Friday, December 19, 2025
[Venue] Online only



One of the largest food trade fairs, the Great Okinawa Trade Fair seeks to expand overseas sales routes for specialty products of Okinawa and Japan utilizing its international logistics hub. This highly successful event has been held 12 times. The Great Okinawa Trade Fair 2024 attracted about 400 buyers and suppliers from both Japan and overseas, and facilitated about 2,400 business introductions.

[Contact]

Executive Committee of Great Okinawa Trade Fair
(inside the Okinawa Industry Promotion Public Corporation)
TEL: +81-98-851-7463 / FAX: +81-98-859-6233
E-mail: daikouekikai@okinawa-ric.or.jp



Official Website



Video
(about 10 min.)
(Japanese language only)

Naha Port : An international trade hub linking Japan and Asia

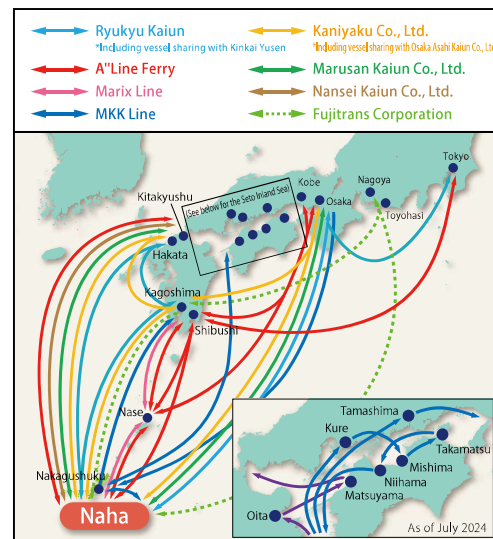
(1) Marine transport network connecting Japan with other countries

As the maritime gateway for Okinawa, Naha Port has 7 regular international container routes serving Taiwan, North America, China, South Korea, and the Philippines and 29 regular and irregular domestic routes (of which 10 are intraprefectural) featuring RORO, general cargo, and other ships serving such locations as Tokyo, Osaka, Kobe, Hakata, and Kagoshima.

Naha Port regular routes (overseas)



Naha's regular and irregular shipping routes (out of prefecture)



Naha's regular foreign trade shipping routes (as of December 2024)

Region	Port of Call	Ship Type	Gross Tonnage (International Tonnage)	Frequency	Time of Passage	Operator
North America	Los Angeles (San Pedro) — Auckland — Yokohama — Naha — Busan-Qingdao — Shanghai-Busan — Los Angeles (San Pedro)	Full container	82,794	1/wk	26d	APL
	Long Beach — Honolulu — Apra (Guam) — Naha — Ningbo — Shanghai — Long Beach	Full container	32,575	1/wk	15d	MATSON
China	Shanghai — Osaka — Kobe — Naha — Shanghai	Full container	9,994	1/wk	1d	Shanghai Jinjiang Shipping
Philippines	Davao — Naha — (Hakata) — (Kobe) — Davao	Freezer container	8,597	1/2wk	3d	FRESH CARRIERS
East Asia (Taiwan)	*Sakishima route extension Naha — Hirara — Ishigaki — Kaohsiung — Naha — Hakata — Kagoshima — Naha	RORO ships	22,633	1/wk	2d	RKK Line
	*Sakishima route extension Naha — Hirara — Ishigaki — Xiamen — Kaohsiung — Naha — Hirara — Ishigaki — Naha	General cargo ship	3,409	1/2wk	3d	NAMSUNG
	Naha (1st) — Yatsushiro — Busan — Matsuyama — Oita — Hososhima — Shibushi — Naha (2nd) — Keelung — Taichung — Kaohsiung — Naha (1st)	Full container	9,996	1/wk	3d	Ehime Ocean Line

*Final ports are in red *Ports of call in () are irregular ports

(2) Measures to strengthen functionality as an international logistics hub

Measures are being implemented to increase the volume of cargo handled, with the aim of realizing a international maritime logistics hub connecting domestic markets with East Asia.

1 Facility maintenance

The Naha Port International Container Terminal has been fitted with gantry cranes and reefer power supply facilities, and the Naha Port Logistics Hub is being developed on an adjacent site.



Naha Port Logistics Hub

Currently, at Naha Port, which handles the majority of Okinawa Prefecture's port cargo, the development of the Naha Port General Distribution Center is underway. We aim to increase the amount of cargo handled by promoting the collection and creation of cargo, improving the sophistication of our logistics, and focusing creating new value-adding industries, such as distribution and processing. The first phase of the Naha Port Integrated Logistics Center opened in May of 2019, and we are currently analyzing the possibilities for the commercialization of the second and third phases of the Integrated Logistics Center.

Floor specifications of logistics building	Dedicated footprint area	Tenants	Handled cargo (Results)
3rd floor: dry goods only	approximately 10,495m ²	Okinawa Koun Co., Ltd., Maruei Logistics Co., Ltd., Ryukyus Logistics Co., Ltd.,	Food, Beverages, General Goods, etc.
2nd floor: frozen, refrigerated, dry goods	"	Okinawa Prefecture Black Sugar Cooperative, Okinawa Kyuso Co., Ltd. Ryukyu Freight Forwarders Co., Ltd.,	Okinawa black sugar, inshore tuna, etc.
1st floor: frozen and refrigerated goods only	"	Nichirei Logistics Kyushu, Inc.	Various frozen and refrigerated foods

2 Initiatives to increase foreign cargo

Support systems such as the Naha Port Transport Efficiency Support Project have been set up to encourage companies to ship more cargo through Okinawa and to establish new sea routes.

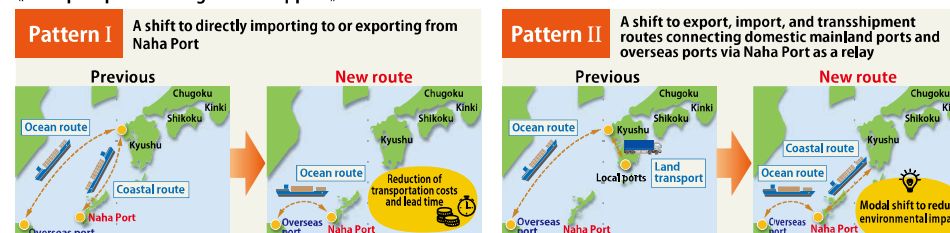
Scan the 2D code for details on the Naha Port Transport Efficiency Support Project▶



Naha Port Transport Streamlining Support Project

- Objective The Naha Port Transport Streamlining Support Project aims to promote the expansion of international container cargo and streamline transport using Naha Port. It will achieve this by helping operators shift to more efficient transportation patterns for international container cargo via Naha Port.
- Target operators Shippers and logistics companies transporting international container cargo
- Support We will subsidize 50% of the expenses related to maritime transportation costs, land transportation costs, and storage costs incurred after shifting the transportation route utilizing Naha Port, with a maximum subsidy of 1 million yen per project.
- Main requirements for support
 - 1) Containers must be imported or exported through Naha Port
 - 2) Transportation must generally use transport pattern I or II (see chart below).
 - 3) Applicants must meet the project's objectives and be planning to use Naha Port continuously

《Transport patterns eligible for support》



Inquiries: Naha Port Management Association, Planning and Construction Department, Minato Promotion Division TEL +81-98-868-2582

Average age
in the nation

#1

Percentage of
residents returning to
home prefecture

#1

As we move into an era of population decline, Okinawa Prefecture is still experiencing population growth. Okinawa is also Japan's youngest prefecture, with the average age by prefecture the lowest at 43.5 years old and Japan's highest proportion of young people (ages 0 to 14) at 16.6%. Each year, a large number of students enroll in the prefecture's industrial education institutions, where the human resources who will lead the manufacturing industry of the future are trained.

(Source: The Basic Survey on Social Security and Population Issues(2023), The Population Census by the Statistics Bureau of Japan)

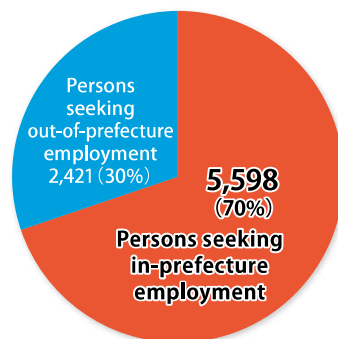
70% of new graduates want to find employment inside of Japan.

■ Data on the employment status of new graduates (job seekers) in the prefecture.

	High school	Junior college	University	Vocational schools, etc.	Total
#of graduates (people)	21,649	526	3,699	3,661	29,535
#of job seekers (people)	1,752	365	2,653	3,249	8,019
Within the prefecture	1,120	262	1,713	2,503	5,598
Outside the prefecture	632	103	940	746	2,421
#of people with unofficial job offers (people)	1,696	350	2,385	2,944	7,375
Within the prefecture	1,083	252	1,500	2,224	5,059
Outside the prefecture	613	98	885	720	2,316
Unofficial job offer rate	96.8%	95.9%	89.9%	90.6%	92.0%
Within the prefecture	96.7%	96.2%	87.6%	88.9%	90.4%
Outside the prefecture	97.0%	95.1%	94.1%	96.5%	95.7%

Source: Employment Security Division, Employment Security Department, Okinawa Bureau of Labor Graduation in March 2024 (as of March 2024)

■ Employment status of new graduates



■ Capacity of universities, technical colleges, prefectural technical high schools, etc.

	Name of school	Capacity	Name of school	Capacity
North	National Institute of Technology, Okinawa College (Regular Course)	160	Nago Commercial and Technical High School	200
Central	Okinawa Prefectural Mirai Senior High School of Technology	320	Misato Technical High School	280
	University of the Ryukyus (Faculty of Engineering)	350		
South	Urasoe Technical High School	280	Naha Technical High School	320
	Nambu Technical High School	120	Okinawa Technical High School	320
Remote Islands	Yayeyama Commercial and Technical High School	160	Miyako Technical High School	120
Overall total				2,630

■ Polytechnic colleges

Name of school	Capacity
Okinawa Polytechnic College	190
Gushikawa Polytechnic College	135
Urasoe Polytechnic College	130
Total	455

*Okinawa Polytechnic Development Promotion Center also has a Faculty of Engineering.

Source: Okinawa Prefectural Board of Education, schools' websites

Education in Okinawa

Okinawa Prefecture provides an educational system and guidance on how to enroll in it in multiple languages with the goal of becoming a place where foreign residents can also feel easy when it comes to living here. The local government conducts information sessions about student life and holds orientation sessions on its systems for helping students to enroll. Thanks to its efforts to promote supplying information about the educational system with non-Japanese in mind, anyone relocating here with school-age children should have no concerns on this front.

International Schools in Okinawa

● Okinawa Amicus International (Kindergarten, Elementary and Junior High School)

1212-1 Enobi, Uruma City
TEL: +81-98-979-4711
<http://www.amicus.ed.jp/en/>

● Okinawa Christian School International

1835 Zakimi, Yomitan Village
TEL: +81-98-958-3000
<http://ocsi.org>

● New Life Academy

134-1 Noborimata, Nakagusuku Village
TEL: +81-98-870-3893
<http://www.newlifeacademy.com>

Japanese Classes + Japanese Language Vocational School

● Okinawa International Exchange & Human Resources Development Foundation

4-2-16 Isa, Ginowan City
TEL: +81-98-942-9215
<http://www.oihf.or.jp>

● Japanese Language Institute, International Center of Language & Culture

Sun Hills Tabaru 2F, 1-4-1 Tabaru, Naha City
TEL: +81-98-859-3881
<https://www.iclcjapan.com>

● Japanese Language School SAEU

2-4-4 Tomari, Naha City
TEL: +81-98-943-3297
<http://www.saelu.net/>

