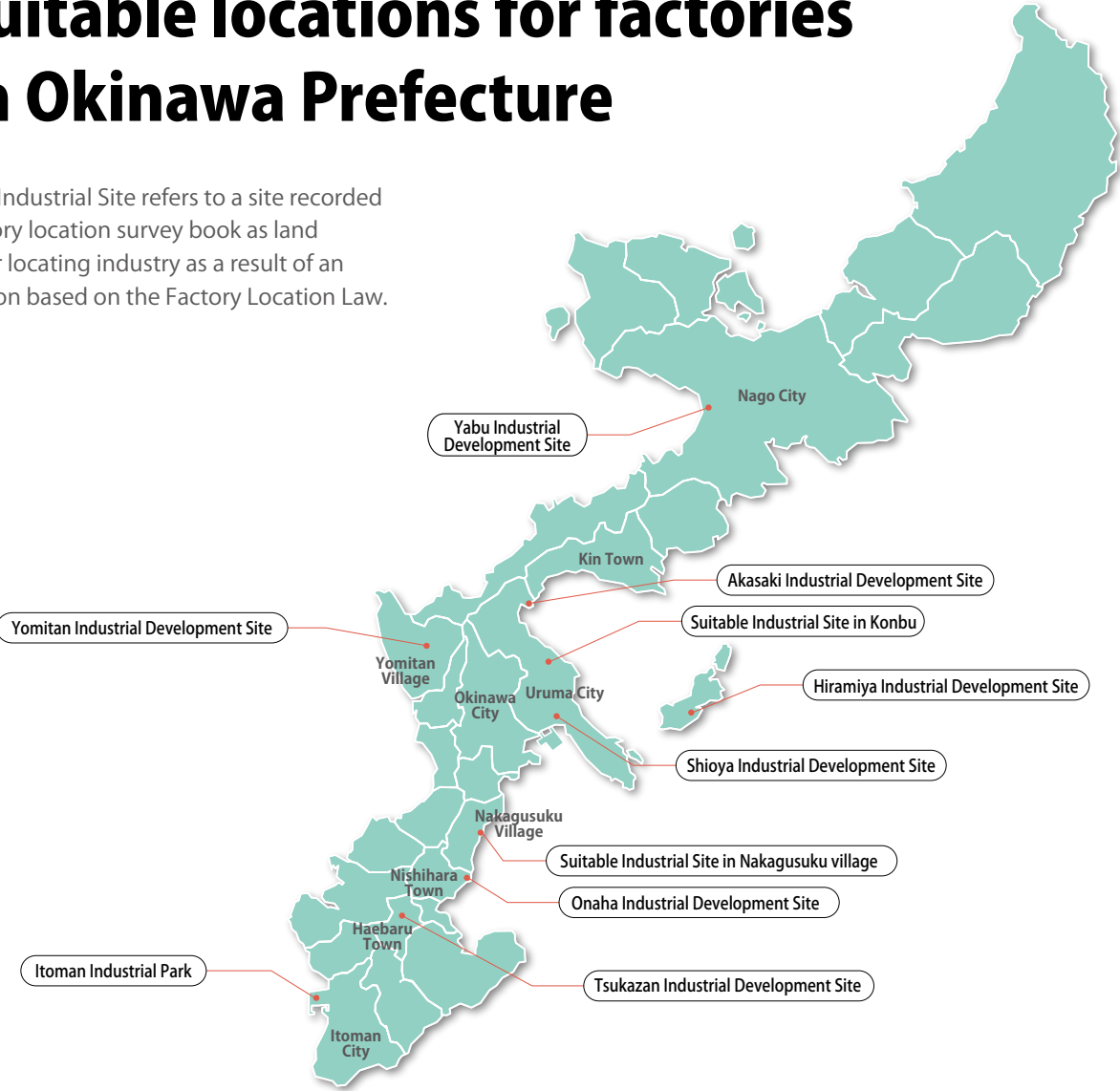


# 6 Suitable locations for factories in Okinawa Prefecture

A Suitable Industrial Site refers to a site recorded in the factory location survey book as land suitable for locating industry as a result of an investigation based on the Factory Location Law.



Name of location suitable for industry	city/town name	Total area (Ha) <small>(No geographical location)</small>	Main land classification	Transportation			Aqueduct	Estimated price (yen/ m <sup>2</sup> )	Principal landowner	Section in charge (phone number)
				Road	Port	Naha Airport				
Yabu suitable location for industry	Nago	13.0 (10.4)	Plain	National highway No. 58 Kyoda IC 800m	Unten Port 18km	75km	Industrial water supply	15,100	Private (agriculture)	Division of Commerce, Industry and Enterprise Promotion (0980-53-7530)
Yomitan location suitable for industry	Yomitan	19.2 (1.6)	Miscellaneous site	National highway No. 58 Ishikawa IC 8km	Nakagusuku Port 28km	30km	water supply system	115,000	Private (non-agriculture)	Commerce and Tourism Section (098-968-3236)
Akasaki location suitable for industry	Uruma	17.1 (0.4)	Reclaimed land	National highway No. 329 Ishikawa IC 500m	Nakagusuku Port 10km	39km	Industrial water supply	75,000	Company	Industrial Policy Section (098-923-7611)
Konbu location suitable for industry	Uruma	35.2 (2.5)	Plain	National highway No. 329 Okinawa-minami IC 500m	Nakagusuku Port 12km	33km	Industrial water supply	12,600	Local public organization	
Shioya location suitable for industry	Uruma	6.0 (0.6)	Plain	National highway No. 329 Okinawa-minami IC 3.5km	Nakagusuku Port 1km	30km	Industrial water supply	44,300	Private (non-agriculture)	
Hiriya district location suitable for industry	Uruma	39.6 (23.6)	Non-residential land	National highway No. 329 Okinawa-kita IC 15km	Nakagusuku Port 10km	43km	Industrial water supply	50,000	Company	Commerce and Tourism Section (098-895-2163)
Nakagusuku location suitable for industry	Nakagusuku	33.8 (1.6)	Residential land	National highway No. 329 Kitanaka Gusuku IC 100m	Nakagusuku Port 9km	23km	Industrial water supply	35,500	Private (non-agriculture)	
Onaha location suitable for industry	Nishihara	78.6 (2.3)	Field	National highway No. 329 Nishihara IC 120m	Nakagusuku Port 13km	16km	Industrial water supply	65,600	Private (non-agriculture)	Industry and Tourism Section (098-845-4540)
Tsukazan location suitable for industry	Haeburu	8.7 (0.6)	Residential land	National highway No. 507 Haeburu-minami IC 100m	Naha Port 6km	7km	Industrial water supply	73,400	Private (non-agriculture)	Commerce and Tourism Section (098-889-4430)
Itoman Industrial Park	Itoman	139.5 (0.0)	Reclaimed land	National highway No. 331 Tomigusuku-Nakachi IC 6km	Naha Port 10km	8km	Industrial water supply	31,900	Development Authority	Urban Planning Division (098-840-8141)
		Grand total 251.2 (43.6)								

\*The area for the still-to-be-located portion is the sum of distributed areas of land rather than the area of a single piece of land.

# 7 Overview of International Distribution Base and Industry Cluster Zone Uruma/Okinawa District (Nakagusuku Bay Port Shinko District Industrial Park)



- International Logistics Hub Industry Development Zone Uruma/Okinawa District
- Former Special Free Trade Zone
- IT Shinryo Park
- 1 Katsuren Castle (World Heritage Site)

2 Okinawa IT Shinryo Park

3 Okinawa Mold Technology Institute

4 Okinawa Health Biotechnology Research & Development Center

5 Okinawa Industrial Technology Center

6 Okinawa Biotechnology Business Support Center

7 Okinawa Life Science Research Center

8 Large shopping center (AEON)

## (1) Uruma/Okinawa District (Nakagusuku Bay Port Shinko District) — Overview

- Total area : 392.4ha

• Former General Industry Zone : 102.6ha

• International Logistics Hub : 122.4ha (Area for lease: 90.0ha) (formerly Uruma District)
- Wharf area : 24.4ha

• Harbor-related facilities area : 37.0ha

• Residential-use area : 37.1ha

• Other (green space, etc.) : 68.9ha
- 

## (2) Regarding target industry sectors

In order to strategically promote the attracting of companies to the prefecture, we are doing more to attract — especially to the International Logistics Hub Industry Development Zone — industries that need to be near an airport or harbor, since companies in such industries can be expected to link up with other tenant companies and with companies elsewhere in the prefecture and can also be expected to generate outbound freight from Okinawa. We are working to bring together businesses of the types indicated below that are in industries that manufacture high-value-added products.

### ① Target Industry Sectors

Okinawa is looking for industry players to revitalize our Airport and port based industries. As a general rule, only companies which plan to ship and export 50% of their products or services outside Japan or Okinawa will be considered. For more information, please contact the person in charge.

### ② Industry Sectors Prioritized for Selection

Okinawa is prioritizing the sectors which match the following criteria.

- Companies which use Naha Airport as their international logistics hub and manufactures products with high profit margins such as semiconductor and electronic-related products as well as Factory Automation and robotics-related products.
- With the aim to develop an industry cluster in aviation, companies which manufacture or process parts and equipments for the aviation sector as well as suppliers of equipment and parts for avionics maintenance services.
- Medical equipment manufacturing industry, including high-tech medical and biotechnology companies.

Note: Other than those stated above, the Okinawan government will continuously gauge socioeconomic changes and add other sectors which show a promising future in driving the prefecture's economy to the list after considering their synergy with other existing local companies

- Companies actively introducing clean energy or DX
- Companies contributing to the earning power of Okinawan companies through new business, new technology, etc.
- Companies with potential to benefit Okinawa's economy through expansion of procurement in Okinawa (parts centers, Repair Center, Central Kitchen, etc.)

Applicable category	Type of Business
Land for sale	○Manufacturing, warehousing, road freight forwarding, wholesaling, designated machinery repair, designated non-store retailing, designated real estate leasing, and aircraft maintenance (industries subject to the international logistics hub industrial concentration zone)
Leased factories for general manufacturing	Manufacturing
Leased factories for high-tech manufacturing	Manufacturing
Support facilities for forges and foundries	Forging- and foundry-related industries (molds, etc.).

## (3) Former Special Free Trade Zone - Overview

- ① Land for sale (as of February 2023)

Total area : approx.900,000m<sup>2</sup> (including land for leased factories)

Area already in use : approx.831,000m<sup>2</sup> (92.3%)

Area still available for use : approx.69,000m<sup>2</sup> (7.1%)
- Individual lot size : ≥3,000m<sup>2</sup> (In principle, we can accommodate requests for any lot size of 3,000m<sup>2</sup> or more.)

Lot price : ¥26,700/m<sup>2</sup> (As of February 2023)
- Land prices are subject to change. Please contact our New Business Facility Promotion Division at 098-866-2770 for more information.



②. Rental space: 48 (General: 42, High-tech: 3, Processing: 3)

① Leased factories for general manufacturing (41)

We have established these factories to serve as receptacles to help the companies that locate here reduce their initial investment and start up earlier, and for the purpose of encouraging manufacturers to concentrate in the Zone.

**Construction/floors :** Steel-frame, single-story construction (Some have two stories)  
**Configuration :** Non-partitioned, free-standing building  
(one part of which is divided into sections)



Exterior of leased factory



Interior of leased factory

Factory type (Site area)	Factory Area	Office Area	Workshop ceiling height *From floor to main beam	Floor load	Other
1,000㎡	660~830㎡	170~340㎡	2.8~7.1m	1.5~2.0t/㎡	*Parking for 20~45 vehiclesper building *Office, kitchenette, separate men's and women's restrooms
1,500㎡	1,073~1,312㎡	188~427㎡	4.5~9.0m		
1,500㎡ (divided into two lots)	Approx. 480㎡/lot	Approx. 270㎡/lot	3.0~5.6m		
2,000㎡	1,566~1,800㎡	200~434㎡	4.6~7.8m		

② Leased factories for high-tech manufacturing (3)

With the aim of creating a model area for advanced manufacturing, we have established these factories to encourage companies to locate here that manufacture high-value-added products using high technology, advanced technology, etc.

Factory type (Total floor area)	Workshop Area	Office and others Area	Workshop ceiling height *From floor to main beam	Floor load	Other
Building No. 1 Stand-alone type (4,636㎡)	Total Workshop Area 2,780㎡	1,856㎡	8.4~10.8m	2.0t/㎡	*Parking for 20~45 vehiclesper building *Office, kitchenette, separate men's and women's restrooms
Building No. 2 Terraced-type 5 units (About 640㎡ per unit)	About 500㎡ per unit	About 140㎡/unit	6.5~8.0m	1.3t/㎡	
Building No. 3 Stand-alone type (4,770㎡)	3,231㎡	1,539㎡	*Raceway (Lighting fixtures) Mounting height: Around 4.30m	1.5t/㎡	

③ Support facilities for forges and foundries (three separate, row-house-style leased factories) Annexed facility: Mold Technology Institute

With the aim of stimulating the manufacturing base in Okinawa Prefecture, we have established these facilities to reduce initial investments for companies in forging- and foundry-related industries and to help them start up and begin operation.

Lease Factory Space (per room)

Building	Annual rent	Work area	Office area	Ceiling height below crossbeams	Floor load	Outdoor space
Bldg. 1	¥3,120,000	350㎡	50㎡	8.3~9.3m	1st floor: 1t/㎡ 2nd floor: 500kg/㎡	Parking for 10 vehicles
Bldg. 2	¥1,560,000	130㎡	70㎡	6.3~7.2m	1st floor: 1.5t/㎡	Parking for 3 vehicles
Bldg. 3	¥2,925,000	260㎡	115㎡	6.2~7.2m	1st floor: 1.5t/㎡	Parking for 6 vehicles

\*Work space can accommodate hoist cranes up to 5 tons.


④ Molding center

The Mold Technology Research Center is attached to the Leased Plant for the Industrial Materials Industry No. 1 Building. This organization works on initiatives such as personnel training, R&D and the provision of equipment (for a fee) to improve mold and die technologies for companies in Okinawa. (Established in April 2010)

Main maintenance equipment at the Mold Technology Institute

**Finishing machine**  
  
High-Speed Machining Center  
  
5-axis machine  
  
Multitasking machine  
  
Diesinking machine

**Analytical software**  
  
Thermal fluid analytical software  
  
Injection molding analytical software  
  
Non-linear analytical software  
  
Multibody dynamics analytical software

**Other**  
  
Coordinate measuring machine  
  
3D real surface view microscope  
  
Heat treat furnace  
  
Laser overlaying/welding machine

**Forming machine/molding machine**  
  
Injection molding machine  
  
Magnesium injection molding machine  
  
Selective laser sintering machine

**Electric vehicle-related**  
  
Chassis dynamo  
  
Regenerative charging/discharging apparatus  
  
Maintenance elevator

Support facilities Corporate Tenant Support Center (Tel : 098-921-0225 / Fax: 098-921-0325) 12-94 Suzaki, Uruma, Okinawa 904-2234

The Center provides support for companies that are already tenants in International Logistics Hub Industry Development Zone Uruma/Okinawa District or that are preparing to locate to the Zone. The facility, which boasts support offices, conference rooms, administrative offices, and more, supports companies in starting up and in beginning operation, with the aim of encouraging additional companies to locate in the Zone.



Corporate Tenant Support Center Conference room (¥210/hr.) Office space (¥18,780/mo.)



### ③ Industrial water

The industrial water supply on the main island of Okinawa has a daily capacity of approximately 30,000m<sup>3</sup>. The planned water capacity for the entire Nakagusuku Bay Port Shinko District is 6,800m<sup>3</sup> per day, 4,700m<sup>3</sup> of which is for the former Special Free Trade Zone.

Water application volume : 100m<sup>3</sup> or more per day (10m<sup>3</sup> or more per day at Itoman Industrial Zone/Nakagusuku Bay Port Shinko Industrial Zone areas)

Contract-based : With this system, the payer is liable for the cost of the entire contracted water volume even if the volume actually used is less than the volume specified in the contract.

\* The standard period from the start of construction to the start of industrial water usage is 2 months.

\* For inquiries regarding use or other matters concerning industrial water, contact the Okinawa Prefectural Enterprise Bureau, Water Supply Management Division (098-866-2810).

### ④ Water supply

Water rate =  
(basic fee + excess usage fee) × 1.10 (consumption tax)

### ⑤ Electricity

If your business plans to use electricity, renewable energy or another energy source, please contact The Okinawa Electric Power Company, Incorporated.

\*Inquiries: The Okinawa Electric Power Company, Incorporated (0120-586-391)

《Fees》

Basic fee	35yen (w/o tax) / m <sup>3</sup>
Excess usage fee	70yen (w/o tax) / m <sup>3</sup>

《Former Special Free Trade Zone Plan Water Volume》

Daily volume	4,700m <sup>3</sup>
Current contract water volume	4,393m <sup>3</sup>

As of end of December 2022



Okinawa Prefectural Waterworks Bureau

《Water pressure》0.05 MPa or greater  
(minimum water pressure at the end of the distribution pipe)

《Water quality》

water temperature	turbidity (degree)	pH	alkalinity (mg/L)	hardness (mg/L)	total dissolved solids (mg/L)	chloride concentration (mg/L)	iron (mg/L)
room temperature	20 or less	6.5~8.0	75 or less	120 or less	250 or less	80 or less	3.0 or less

Sources : Okinawa Industrial Water Supply Regulations (water application volume, water quality, water pressure), Okinawa Industrial Water Fee Collection Regulations (fees)

By application	Standard charge (per month)	Excess usage charge per 1 m <sup>3</sup>
For business	Up to a water quantity of 10m <sup>3</sup>	Charge 1,554 yen
		11 to 30 cubic meters 210 yen
		31 to 100 cubic meters 240 yen
		101 to 300 cubic meters 264 yen
		Above 301 cubic meters 284 yen

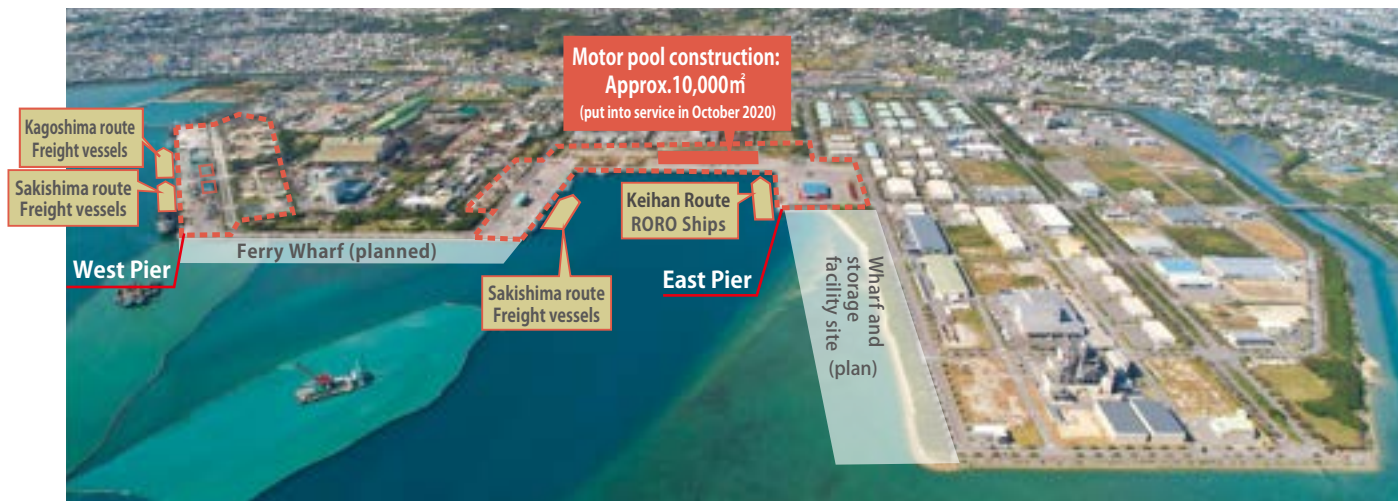


Uruma City Water Rates Price List

## (4) Nakagusuku Bay Port Shinko District Overview

### ① Status of Wharf Usage

- We will promote the enhancement/expansion of logistics capabilities through the development of industrial supply ports and the commissioning of ocean liners.
- West Wharf: Mainly used for bulk cargo such as sand, gravel, animal feed, and scrap. Cargo ships on the Kagoshima and Sakishima routes call at the port here.
- East Wharf: In addition to the use of building materials, RORO vessels on the Keihan route call at this port. A motor pool for the temporary storage of automobile cargo was constructed and put into service in October 2020.
- We will continue to enhance/expand logistics capabilities through work to construct facilities and establish/expand shipping routes.



### ② Keihan Route

○Services RORO ships that depart from Naha Port and call at Osaka Port and Tokyo Port via the Nakagusuku Bay Port New Port Area.

	Sun	Mon	Tue	Wed	Thu	Fri	Sat
Entry		Naha New Port 7:00		Nakagusuku Bay Port 20:00		Osaka South Port 8:00	Osaka South Port 14:00
Departure			Naha New Port 17:00	Nakagusuku Bay Port 22:00	Osaka South Port 12:00	Tokyo Ariake Port 19:00	Osaka South Port 20:40

○Cargo acceptance: Application deadline: 8:30am on weekdays to 5:30pm on the day before the vessel's arrival. Weekdays: 8:30am – 5:00pm

\*Only bring in cargo after applying. If you do not apply, we may not be able to accept your cargo.

○Receipt of cargo for loading: Delivery time: 8:30 to 17:00 on weekdays  
Delivery on the day of vessel's arrival at port: Until 21:30

\*Please contact us in advance for cargo delivery outside the above weekday hours.  
\*Cargo delivery and pick-up on Saturdays and holidays will be decided upon by prior arrangement.

○Inquiries: Cargo acceptance - please contact the Chubu Branch Office of Okinawa Port Transport Co., Ltd. At 098-923-0411.  
Shipping routes - please contact the Sales Department of Ryukyu Kaiun Co., Ltd. At 098-868-8162.



\*From the Ryukyu Kaiun Co., Ltd. Website  
Name of vessel: Nirai Kanai II  
Gross tonnage: 11,687 tons  
Length: 181.51 meters



### ③ Kagoshima route

○A cargo ship that connects Nakagusuku Port with Kagoshima Prefecture's Shibushi Port and Kagoshima Taniyama Port has been launched.

	Sun	Mon	Tue	Wed	Thu	Fri	Sat
Arrival		Shibushi Port 8:00	Kagoshima Taniyama Port 8:00		Nakagusuku Port 8:00		Kagoshima Taniyama Port
Departure		Shibushi Port 17:00	Kagoshima Taniyama Port 17:00		Nakagusuku Port 17:00		

○Cargo reception: reception deadline is 3:00 p.m. the day before arrival  
Deadline for loading cargo is 3:00 p.m. the day before arrival

○Unloading: delivery is 3:00 p.m. on weekdays  
Ship arrival date: none

○Inquiries: Nakagusuku Port Transportation Office, Sales Department 098-934-0781  
MKLINE Co., Ltd., Sales Department, 098-876-3300



○Main calling ports and ships  
Multi-purpose cargo ship  
Ship name: Seizan Maru No.8  
Gross tonnage: 498G/W  
Overall length: 76.20m



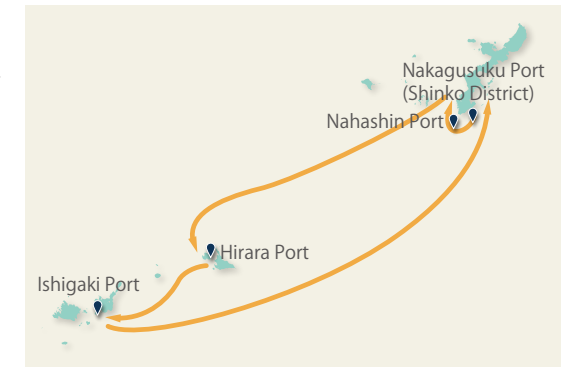
### ④ Sakishima route

- The cargo ship that departs from Naha Port, then passes by Hirara Port (Miyako Island) and Ishigaki Port, and calls at Nakagusuku Port (Shinko District) is making unscheduled calls.
- Currently, the recycling cargo (mainly used automobiles and scrap metal), which will be used as renewable resources, is collected from Miyako Island and Ishigaki Island, and will be transported to Nakagusuku Port (Shinko District) on an inbound trip (trip back from Sakishima).



Image source: Nansei Kaiun Co., Ltd. website

○Main calling ports and ships.  
Multi-purpose cargo ship  
Ship name: Harimizu  
Gross tonnage: 499G/W



### ⑤ Parking lot for temporary storage of automobile cargo

○Many automobile-related companies are located in the central region of Okinawa Island, including used car retailers, used car auction sites, and storage centers for kei-car manufacturers. Therefore, we aim to make Nakagusuku Port (Shinko District) a base for gathering automobile cargo, and we are working on building a parking lot to temporarily store automobile cargo.

○So far, approximately 10,000m<sup>2</sup> have been built and were put to service in October 2020. We will continue to work on expanding its space.



○The parking lot is paved with asphalt to protect the automobiles from stains or damage caused by mud or sand. It is also equipped with an anti-sand net fence for security and to prevent salty sea breeze.

### ⑥ A wharf site for heavy cargo

○At Nakagusuku Port (Shinko District), heavy cargo can be handled at the wharf site adjacent to the quay.

○The -7.5m, -10m, and -13m quays, as well as the wharf site behind them at the west wharf have security measures based on the SOLAS Convention. We plan to implement them in the east wharf as well in the future.

- The area that can be used for heavy cargo is the one with the red line filled with yellow in the right figure. (The size is approximate.)
- It is paved with asphalt.
- In-operation image (reference)



Google Image ©2020 Maxar Technologies, Planet.com

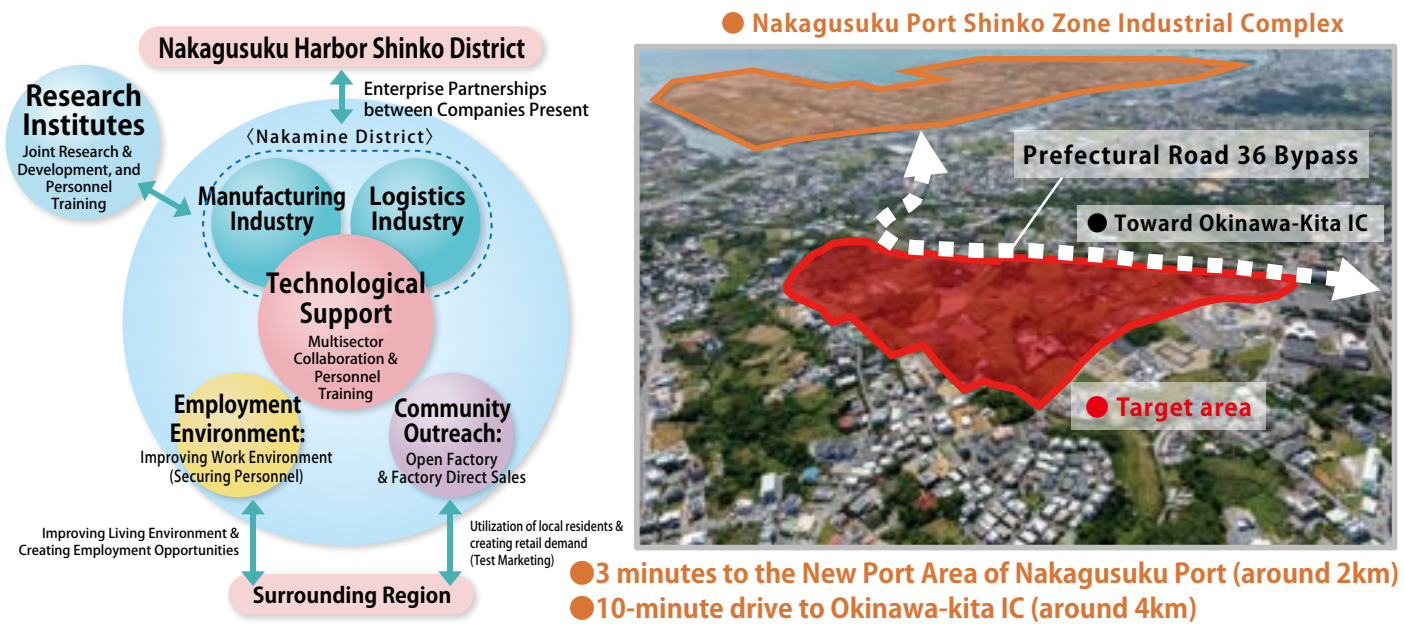


# 8 New industrial sites in Okinawa Prefecture

## (1) Nakamine & Uezu Districts in Uruma City

### ■ Overview & Location

Uruma City is developing plans for a new industrial zone to secure additional employment opportunities for the population and land for industrial clusters. At the moment, the Nakamine & Uezu districts have been selected as candidate sites as they are poised to become the drivers of economic development and expected to share industrial functions with the Nakagusuku Harbor Shinko District. Surveys and studies aimed at establishing fundamental infrastructure there is currently underway.



### ■ Development Proposal

Sector	Name	Area (ha)	Percentage (%)	Key Features
	City Planning Road (W=14m)	0.69	3.47	Extension L=418m
	District Street (W=12m)	0.40	2.01	Extension L=244m
	District Street (W=9m)	0.36	1.81	Extension L=426m
	District Street (W=6m)	0.23	1.16	Extension L=244m
	Parks & Green Spaces	0.77	3.88	
	Retention Basins	0.90	4.54	V=19,300m <sup>3</sup>
	Public Spaces Subtotal	3.35	16.87	
	Logistics & Manufacturing Industry Zone	15.01	75.66	Including green buffer zone 12.79 + 2.22 = 15.01ha
	Green Buffer Zone	—	—	
	Civic Center Zone	0.62	3.13	
	Residential Zone	0.68	3.43	
	Transmission Tower Zone	0.18	0.91	
	Residential Land Subtotal	16.49	83.13	
	Total	19.84	100.00	

\*This is nothing more than an example and may be changed in the future.

### ■ Planning Schedule

Development Schedule	2021	2022	2023	2024	2025	Later
Attracting Businesses	Promotional Activities to Attract Businesses				Handover to the preceding block company	Handover of developed block as need arises
Infrastructure Planning & Infrastructure Development	Business survey/basic design	Business plan/implementation design	Business license	Infrastructure development (preceding block)	Infrastructure development	

\*This is only a tentative schedule and is not final (as of January 2022).

■ About attracting businesses/Industrial Policy Division, Department of Economy, Uruma City Council; TEL: 098-923-7611

■ About development plans/development projects Section name: Uruma City Planning Department, Project Promotion Section 1; Phone number: 098-973-5373

## (2) Maezato District, Itoman City

### ■ Overview and Location Map

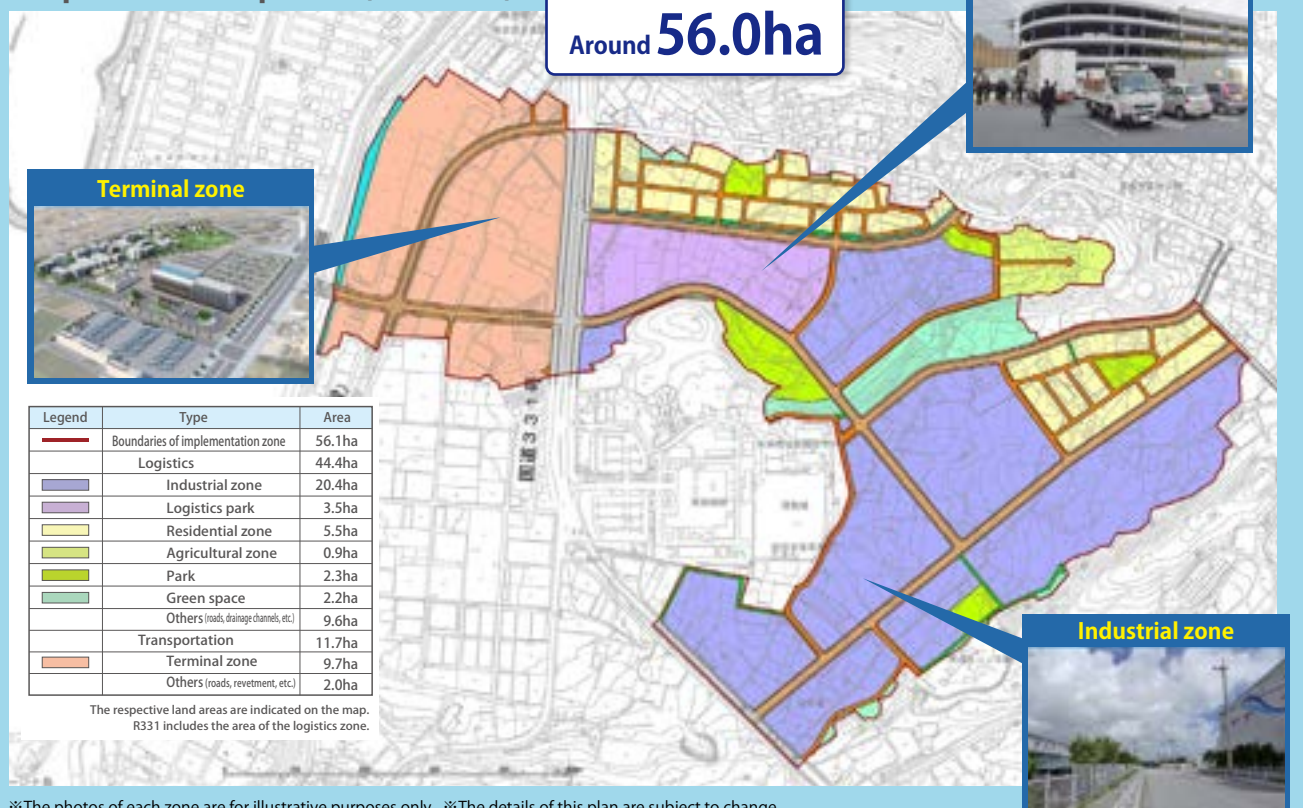
The planning area is located about 15 minutes (10.4km) by car from Naha Airport, and the northwest part of the area is adjacent to the existing urban area. National Route 331 Itoman Road runs through it, providing convenient transportation access.

Naha Port	Around 20 minutes (12.6km)
Naha Airport IC	Around 15 minutes (10.4km)
Tomigusuku IC	Around 19 minutes (9.1km)
Tomigusuku/Nakachi IC	Around 13 minutes (8.6km)
Prospective Toyosaki Industrial Site	Around 6 minutes (4.1km)
Itoman Industrial Park	Around 5 minutes (3.1km)
Itoman City Hall	Around 3 minutes (1.0km)



### Proposed development (tentative)

Total area:  
Around **56.0ha**



※The photos of each zone are for illustrative purposes only. ※The details of this plan are subject to change.

### ■ Planning Schedule

Project details	2021	2022	2023	2024	2025	2026	2027
Project approval					Approval		
Commencement of construction							
Application / Distribution						Application	Distribution

※This schedule is subject to change.

■ Enquiries regarding attracting new companies /

Section: Commerce, Industry, and Fisheries Section, Economy Department, Itoman City / Telephone: 098-840-8137

■ Enquiries regarding the planning schedule /

Section: Urban Planning Section, Construction Department, Itoman City / Telephone: 098-840-8141



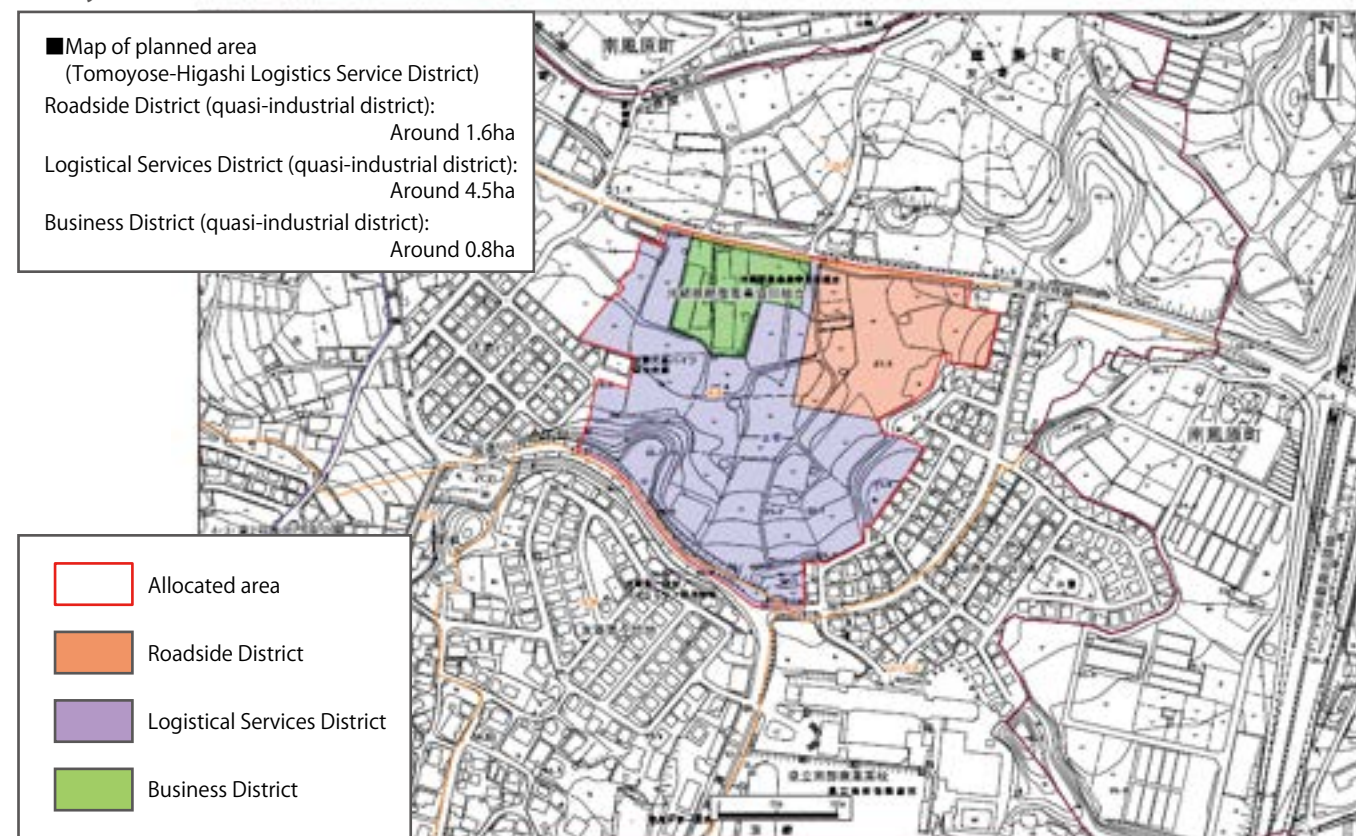
**(3) Tomoyose-Higashi area, Yaese Town****■ Overview and map of location**

Located next to Prefectural Route 48 and near many major roads including the Naha Airport Expressway (Haeburu-Minami Interchange) and National Highway No. 507, this area in the northeast of Yaese Town couldn't be more conveniently located.

To get the most out of this prime land and vitalize Yaese Town, measures are underway to attract operators of commercial buildings such as retail stores, industrial facilities such as logistics hubs and warehouses, and business facilities such as offices.



● 2 minutes by car (around 1km) to Haeburu-Minami Interchange

**■ Layout (tentative)****■ Planned schedule**

Work	2022	2023	2024	2025	2026	2027	2028
Recruitment of companies	Recruitment of companies/application process						
Development plan	Decision of urban planning	Surveying/measurement/design/project planning/application for permits for development, etc./building of foundations					

\*The above schedule is correct at present but has not been finalized. (As of January 2023)

■ Inquiries about recruitment of companies: Planning and Finance Division, General Affairs Department, Yaese Town Hall (TEL 098-998-2668)

■ Inquiries about urban planning: Urban Development Division, Economic Affairs and Construction Department, Yaese Town Hall (TEL 098-998-6989)

**9 Comments from companies that have expanded into Okinawa Prefecture****I-PEX Inc.**

○Industry type: Electronic component manufacturing

○Expansion into Okinawa: February 2019 ○Location: Tomigusuku City, Uruma City

**Q1. What led to I-PEX expanding into Okinawa?**

We opened our International Management Office Administration Headquarters in Tomigusuku City in February 2019 to provide support for our overseas sales staff and 17 international companies. In May of the same year, we established "the I-PEX Global Operations, Inc." In January 2020, we opened a factory at the Okinawa Machine Parts and Tooling Industries Promotion Facility in Uruma City. In December 2022, we opened the Okinawa Innovation Center, our third site.

**Q2. Why did you choose Okinawa?**

We chose Okinawa because it has a well-developed logistics and air transport network because of its tourism and a large number of multilingual personnel proficient in English and Chinese. There are also many industrial education institutions producing 3,000 prospective engineers every year, which gives us an advantage in securing young, talented personnel.

**Q3. What message would you give to companies who are considering setting up in Okinawa?**

The Okinawa prefectural government and the Japanese government's Okinawa General Bureau provide extensive support to promote the manufacturing industry, and there are various advantages for companies that take on new initiatives. There are opportunities to connect with companies in the prefecture and great potential for new discoveries and fresh business ideas.

**FMD Co., Ltd**

○Industry type: Medical devices

○Expansion into Okinawa: February 2018 ○Location: Uruma City

**Q1. What led to FMD expanding into Okinawa?**

Producing guidewires requires a large workforce, so securing personnel is essential for business expansion. However, we could not hire as many people as we wanted at our existing sites, and we were considering expanding to include overseas locations. In 2016, we attended a seminar to attract companies to Okinawa and decided to establish a site here because there are a lot of young workers here and it's a good location from the perspective of BCP.

**Q2. Why did you choose Okinawa?**

We chose Okinawa because of how easy it is to hire young talent, its incentive program and its proximity to other Asian countries. With markets expanding into Southeast Asia and China, the former Special Free Trade Zone of Uruma City, where we established our Okinawa site, was an excellent base for overseas exports.

**Q3. What initiatives do you want to pursue in the future at your Okinawa location?**

Part of our production process is currently carried out at our Aichi factory, so we plan to expand our Okinawa site so that in future we can do all of our production at our Okinawa factory.

**NanoSystem Solutions, Inc.**

○Industry type: Semiconductor manufacturing equipment

○Expansion into Okinawa: April 2015 ○Location: Uruma City

**Q1. What led to NanoSystem Solutions expanding into Okinawa?**

When we started developing laser processing systems, we moved our head office here from Tokyo using the Okinawa New Industry R&D Support Project. Our customers are located mainly in Kyushu, Taiwan, China and other parts of Asia. In Okinawa, we have a geographical advantage that allows us to offer services and support to customers from Japan and overseas in the same way as if we were providing it from the Tokyo metropolitan area.

**Q2. Why did you choose Okinawa?**

Okinawa has an ideal environment for startups. They offer factories for rent, capital loan schemes, business grants, and transportation subsidies. The Okinawa prefectural government reached out to startups with business plans that were not attracting attention in metropolitan areas.

**Q3. What message would you give to companies who are considering setting up in Okinawa?**

The climate is consistent without much variance in temperature throughout the year, which helps to keep cleanroom operating costs low and makes it easy to schedule production and shipments. Okinawa is also a well-known area, which adds to our appeal among customers throughout Asia.



# 10 An aviation-related business cluster focused on maintenance, the first in Japan.

## (1) Initiatives for the Creation of an Aviation-related Industry Cluster

Okinawa Prefecture aims to create an aviation-related industry cluster centered on the first domestic aircraft maintenance business, leveraging its advantages such as proximity to Asia, which is expected to see increased demand for air transportation as a result of global economic growth. As the first step of these efforts, Okinawa Prefecture established an aircraft maintenance facility at Naha Airport which will serve as the starting point for the aviation-related industry cluster. MRO Japan Co., Ltd. has moved into this facility, and as a core company of the aviation-related industry cluster, it is expected to bring economic and employment benefits.

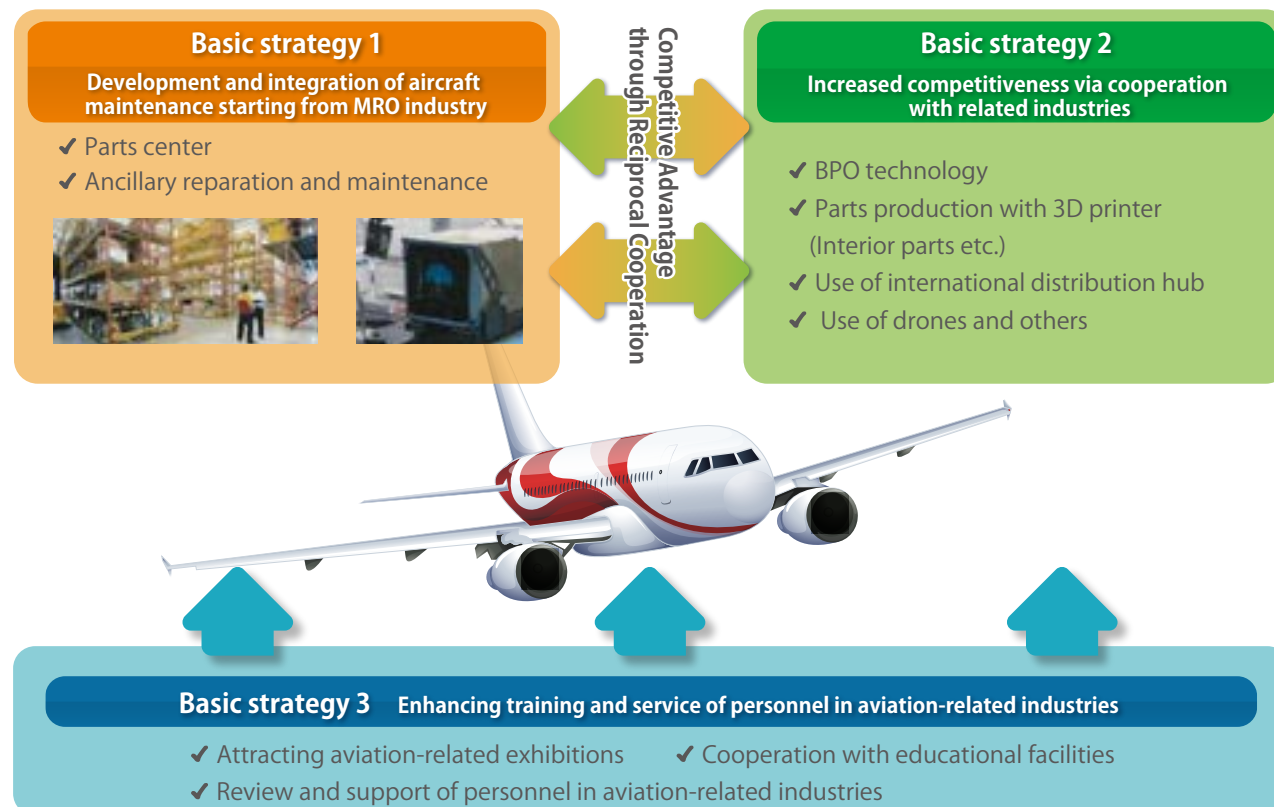
Diverse demand deriving from aircraft maintenance is anticipated, including for maintenance of equipment and engines used on aircraft, etc., storage and distribution of parts, maintenance-related consulting, research and development, and training of personnel engaging in aviation-related industries, etc. To meet this foreign and domestic demand, Okinawa Prefecture is working to recruit companies and train personnel based on its action plan for establishing an aviation-related industry cluster.



Maintenance of aircraft (Large dock inside the aircraft maintenance facility, MRO Japan Co., Ltd.)



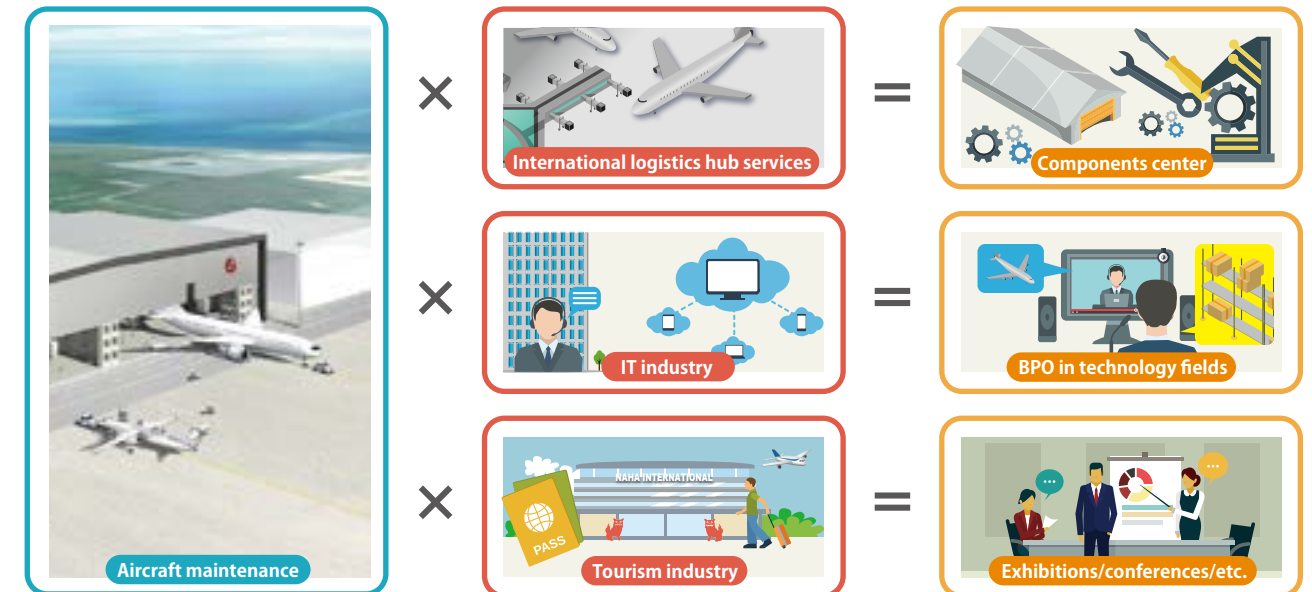
Okinawa Prefecture Aviation-Related Industry Cluster



## (2) Aviation-related businesses leverage Okinawa's strengths

Okinawa offers a variety of advantages to companies doing business there, including tax incentives in the international logistics industry zone, proximity to the center of demand in Asia, and an abundant workforce. Furthermore, companies can expect to take advantage of Naha Airport's function as an international logistics hub, as well as partnerships with IT companies clustering in the area, etc.

### Examples of Coordination with Existing Industry

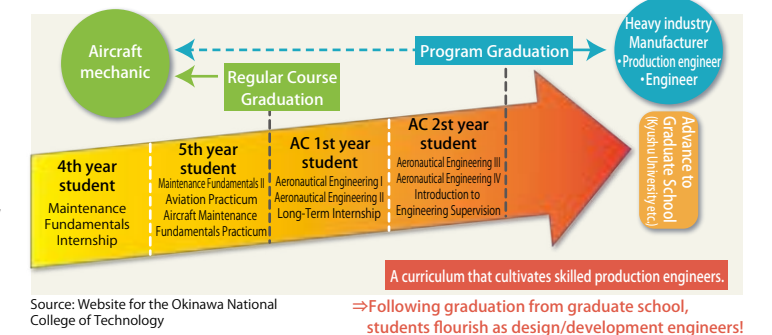


## (3) About Aviation-related Personnel Training Initiatives in Okinawa

The National Institute of Technology, Okinawa College established an Aviation Engineer Program in 2015, and is working to educate talent capable of contributing to aviation-related industries. As of March 2020, 61 individuals have completed the course and secured employment with aviation companies or companies specializing in engine design and aircraft maintenance, etc.

Additionally, there have been cases of graduates of Okinawa universities, technical high schools, and regular high schools securing employment with maintenance companies.

### Outline of Aviation Engineering Program



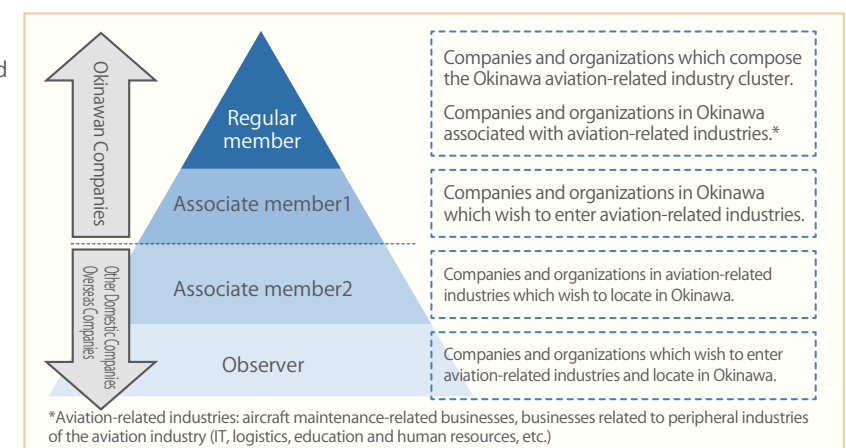
## (4) About the Okinawa Aviation Industry Cluster Promotion Association

Okinawa Prefecture collaborated with foreign and domestic companies to found the Okinawa Aviation Industry Cluster Promotion Association with the goal of promoting aviation-related industries in order to create a cluster with a concentration of aviation-related industries, including peripheral industries, centered on aircraft maintenance, and began recruiting members in October 2019. 23 members have participated as of the end of March 2023.

### [Initiatives]

- Disseminating information via digital newsletters and websites, etc.
- Efforts to facilitate improvements in productivity and competitiveness through collaboration by companies
- Publicity and promotional activities to encourage development of sales channels
- Initiatives to train and secure personnel required by aviation-related industries
- Encouraging companies entering aviation-related industries

Joining this association is free of charge. For details on applying and registered members, please refer to the website on the right (see QR Code).





# 11 The IT Industry in Okinawa

## Okinawa IT Shinryo Park: The bridge between Japan and Asia

The Okinawa IT Shinryo Park is a big project that will make Okinawa Prefecture a major hub for domestic and international information and communication related industries. The word "Shinryo" means a bridge to Asia.



Okinawa IT  
Shinryo Park

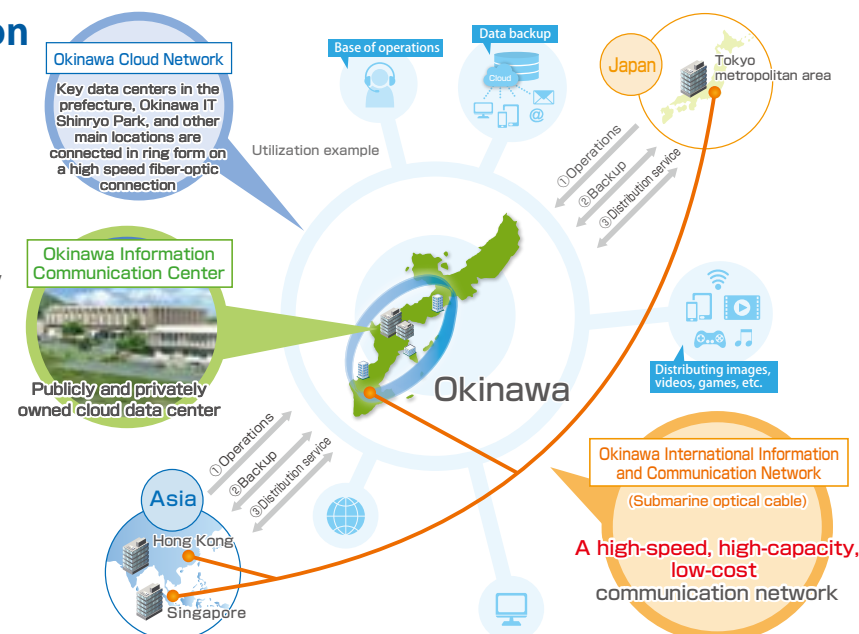
- ① Core Function Support Facility
- ② Enterprise Location Promotion Center
- ③ Asia IT Training Center
- ④ Information and Communication Equipment Verification Facility

- ⑤ Enterprise Cluster Facility No. 1
- ⑥ Enterprise Cluster Facility No. 2
- ⑦ Enterprise Cluster Facility No. 3
- ⑧ Enterprise Cluster Facility No. 4
- ⑨ Enterprise Cluster Facility No. 5

- ⑩ Enterprise Cluster Facility No. 6
- ⑪ Asia IT Business Center
- ⑫ Corporate Concentration Facility, Bldg. No. 7

## The International Information and Communication Hub Connecting Japan and Asia

In Okinawa, the Okinawa International Information Communication Network (submarine fiber optic cable) directly connects the Tokyo metropolitan area, Okinawa, and Asia, the Okinawa Cloud Network interconnects major data centers in the prefecture, and a public-private cloud data center. These form a single package to create a cloud environment supported by both public and private sectors. By providing these advanced information and communication infrastructures, we are able to offer high value-added services that support cloud computing, big data, and other technologies, as well as an environment for creating interactive business across Asia.



## ResorTech Okinawa

ResorTech Okinawa is a suite of initiatives in Okinawa for social and economic DX to contribute to the realization of a digital society. It spearheads various measures, including the promotion of collaboration between IT and other industries.

### Website

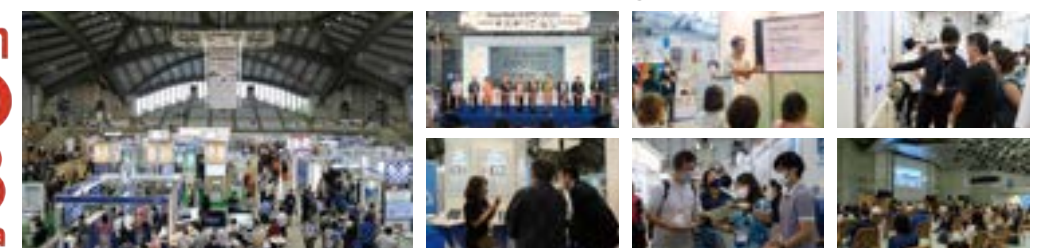
This website provides useful information for companies seeking to digitalize or adopt DX, including examples of cutting-edge projects in Okinawa and details on support and events.



## ResorTech EXPO in Okinawa

An international IT trade fair will be held with many companies from Okinawa, elsewhere in Japan and abroad. It will feature programs such as exhibitions of solutions, business matching, and DX-related seminars.

ResorTech  
EXPO  
2023  
in Okinawa



Next expo

Period: November 9 (Thu.) - 10 (Fri.), 2023 Venue: Okinawa Arena

ResorTech EXPO in Okinawa Steering Committee Secretariat (inside IT Innovation and Strategy Center Okinawa)  
E-mail : resortech@isc-okinawa.org



Industlink, our service for connecting other industries with Okinawa-based IT companies, provides companies with support for implementing DX, including researching and comparing IT solutions to solve issues faced by the company. You can also request a consultation through the Industlink website.



## ICT Industry Support Guide

Here you can find helpful information for starting an IT or digital-related business or setting up a new site here, including Okinawa's support systems and extensive infrastructure that supports IT business and industry DX.





# 12 Okinawa's energy policy for creating a carbon-free

To play its part in building a carbon-free society in FY2050, Okinawa will promote the expansion of clean energy facilities while encouraging the use of special taxation such as the Industrial Innovation Promotion Zone System (see page 21 of the Industrial Location Guidebook).

## ● Okinawa Prefectural Clean Energy Initiative

Established March 2021 (amended March 2022) \*Okinawa Prefectural Energy Plan

### Future vision for FY2030

"An Okinawan island energy society with low carbon emissions and resilience against disasters"

3  
fundamental  
goals

Transition  
to low-  
carbon energy

Transition to  
autonomous,  
decentralized energy

Transition to  
locally produced,  
locally consumed energy

### Quantitative goals for FY2030

① Ratio of power from  
renewable energy

③ Energy self-  
sufficiency rate  
(linked to ①)

#### Challenging goal

(the goal that will be set if technological innovation takes place in future and that new technology is used)

26%

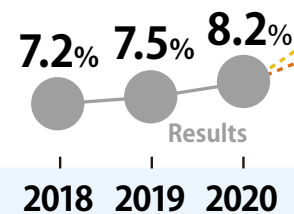
7%

#### Ambitious goal

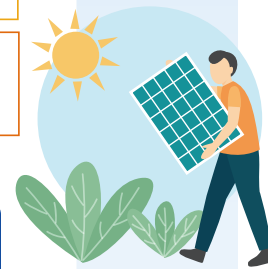
(steady progress)

18%

5%



② Ratio of hydrogen/ammonia power  
Reach 1% by FY2030



### Action plan (implementation of specific measures) \*Excerpt describing main initiatives

#### Key projects

(measures being taken with the aim of achieving goals for FY2030)

- |  |   |
|--|---|
| ① Introduction of renewable energy across a wider area | <ul style="list-style-type: none"> <li>Build smart community model on small, remote islands (use results of prefectural proofs of concept to encourage adoption of projects)</li> <li>Further introduction of biomass</li> <li>Wider adoption of wind power</li> <li>Wider adoption of solar power at farms, ports, etc.</li> </ul> |
| ② Expansion of locally consumed renewable energy       | <ul style="list-style-type: none"> <li>Promotion of model for third-party ownership of solar power</li> <li>Wider adoption of storage cells, etc.</li> </ul>  |
| ③ Wider use of natural gas                             | <ul style="list-style-type: none"> <li>Wider use of soluble natural gas</li> <li>Promotion of fuel transition by industries, etc.</li> </ul>  |
| ④ Further popularization of EVs                        | <ul style="list-style-type: none"> <li>Better conditions for EV usage</li> <li>Use of EV-based energy management system</li> </ul>  |

#### Challenging projects

(experimentation for implementation of future technologies)

- |  |  |
|--|--|
| ① Use of next-generation energy sources (hydrogen, ammonia, etc.)                        | <ul style="list-style-type: none"> <li>Encouraging exploration of possibilities, creation of proof-of-concept projects, etc.</li> <li>Building hydrogen and ammonia supply frameworks</li> </ul> |
| ② Promotion of development of alternative energy sources such as marine renewable energy | <ul style="list-style-type: none"> <li>Promotion of development and practical use of marine renewable energy</li> </ul>  |
| ③ Creation of smart cities   | <ul style="list-style-type: none"> <li>Building models to solve social issues, centering on energy management system technology</li> </ul>   |

Inquiries

Industrial Policy Division TEL 098-866-2330 FAX 098-866-2440

\*Source: Brochure by Industrial Policy Division, Okinawa Prefectural Government (FY2022 edition)

# society by FY2050



## ● Okinawa's one-stop consultation service for the adoption of clean energy

Industrial Policy Division, Department of Commerce, Industry and Labor, Okinawa Prefectural Government

A consultation service will open in Okinawa as part of an initiative to promote more widespread adoption of clean energy in the prefecture. The consultation service provides information and advice on support systems, such as Japanese and Okinawan government subsidies and taxation systems, to organizations considering measures such as installing renewable energy equipment. It also provides consultation and support to Okinawa municipalities that aim to adopt renewable energy more widely.

Information and advice on subsidies and other assistance

Promoting the use of special taxation measures for renewable energy equipment and similar purposes

Consultation and support for municipalities in Okinawa for wider adoption of renewable energy

Systems	Details
Information and advice on subsidies and other assistance	Provides information on support systems, such as Japanese and Okinawan government subsidies for measures such as the installation of renewable energy equipment, and offers support for any necessary procedures
Promoting the use of special taxation measures for renewable energy equipment and similar purposes	Special taxation measures for renewable energy equipment and similar purposes (Business Innovation Zone System) <ul style="list-style-type: none"> <li>Investment tax credit (Up to 15% deduction from corporate tax)</li> <li>Property tax exemption</li> </ul>
Consultation and support for municipalities in Okinawa for wider adoption of renewable energy	Offers services such as consultation and support for Okinawa municipalities aiming for wider adoption of renewable energy



### Okinawa's one-stop consultation service for the adoption of clean energy

Scan the QR code to the right for contact information and more details



Okinawa's one-stop consultation service for the adoption of clean energy

#### Advantages of installing renewable energy equipment:



Reduction in electricity costs



Electricity is available even in the event of a disaster



Improvement of corporate image



Reduction of CO<sub>2</sub> emissions





# 13 Okinawa Prefecture's bio industry

## Building a world-class glocal community

### Okinawa Biocommunity



#### Okinawa's strengths

#### Certification

#### Cooperation

○As the only prefecture in Japan with a subtropical oceanic climate, Okinawa has among the greatest biodiversity in Japan, particularly in marine life, providing an abundance of resources for the bio industry.

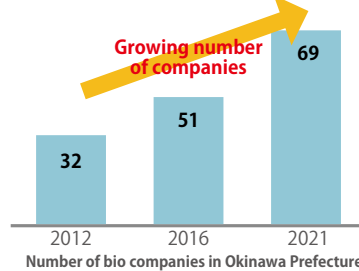
○In December 2022, Designated by the Japanese government as a Regional Bio-Community in recognition of its global importance in the bio realm due to its abundant bio resources and its physical location, which is suited as an Asian hub.

○Okinawa Prefecture's biocommunity works together with major Japanese bio organizations, including global biocommunities such as BioK (Biocommunity Kansai) and GTB (Greater Tokyo Biocommunity), to provide support for research, technology and product development, along with information sharing and matching services.

### Incubation facilities

○Incubation facilities such as Okinawa Health Biotechnology Research & Development Center and Okinawa Biotechnology Business Support Center carry out cutting-edge research and development using biotechnology.

Inquiries: Okinawa BioCommunity office  
TEL: 098-982-1100  
Website: <https://okibic.jp/>



Okinawa Health Biotechnology Research & Development Center

## Initiatives to promote bio industry

### Support and personnel development for research, development, commercialization, etc.

Inquiries: Manufacturing Promotion Division, Department of Commerce, Industry and Labor  
TEL: 098-866-2337

#### Research, development and business support

#### ○Initiatives to promote commercialization in the bio industry

Support (subsidies) for research and development by current and prospective bio companies

#### ○Initiatives to provide business support for bio companies

Hands-on support including procurement of funding, person

#### Development of advanced personnel for the bio field

#### ○Data science personnel training

Training courses for bio-informatics personnel who can work in a variety of fields including drug discovery and commercialization of products such as health products (for companies, etc. in Okinawa)

#### Bio-informatics personnel training courses

#### Introductory course

The basics of data science for life sciences and information sciences

#### Intermediate course

Statistical data, algorithms, machine learning, bio-informatics

21 lectures in total (theoretical and practical) in 2022  
For workers, researchers, students, etc. in Okinawa Prefecture

### Health foods

Inquiries: Okinawa Prefecture Health Industry Association  
TEL: 098-975-6230  
Website: <http://www.kenshoku-oki.com/>

#### ○Platform to support companies in strengthening their brand power

This platform helps health food companies in Okinawa to find strategic, cross-sectional solutions to issues they face in areas such as functionality research, marketing, product development and exploring sales routes.

### WELLNESS OKINAWA JAPAN (WOJ): A proprietary certification system



To qualify for this certification, the certifying body must be satisfied that the product has functional value, is safe, and possesses emotional value unique to Okinawa.

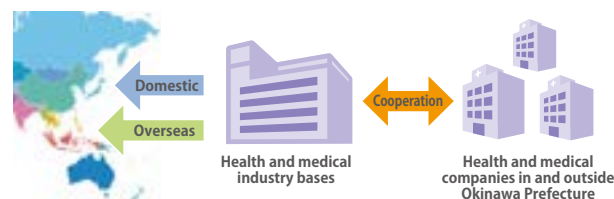


### Building an industry hub centering on the health and medical fields

Inquiries: Manufacturing Promotion Division, Department of Commerce, Industry and Labor  
TEL: 098-866-2337

○Located centrally among East Asia countries with its own airport, Okinawa is a prime hub for cutting-edge medical businesses such as regenerative medicine, and has the potential to become a bio-hub for the health and medical fields.

○Okinawa Prefecture is working to build an industry hub centering on the health and medical fields to meet potential future demand.



# 14 Research Institutes in Okinawa

Okinawan research institutes such as the Okinawa Industrial Technology Center and the Okinawa Biotechnology Business Support Center are located in the Uruma/Okinawa district, an international logistics hub. Various other research institutes are located within the University of the Ryukyus, which is within a 30-minute drive. We support businesses in the area through applied research, human resources training, and the provisions of scientific and technological information based on an organic collaboration with the institutions.

	Name	Location	Main Business or Area of Research	TEL	QR
Okinawa	Okinawa Industrial Technology Center	Uruma City	Providing various technical services to support the resolution of technical issues and product development for companies located in Okinawa. Conducts experimental research for chemistry, food, ceramics, and machinery and metals.	098-929-0111	
	Okinawa Mold Technology Institute		Trains engineers, provides equipment, and conducts experimental research relating to molds	098-929-0280	
	Okinawa Health Biotechnology Research & Development Center		Incubation facility where companies can utilize research equipment to conduct bio health related research Helping to turn research results using biotechnology into businesses and products.	098-923-1768	
	Okinawa Biotechnology Business Support Center			098-934-8435	
	Okinawa Life Science Research Center		Conducts advanced research and development for pharmaceuticals and food with health-promoting benefits, utilizing the regional characteristics and biological resources of Okinawa (Satisfies physical containment (P2) safety requirements)	098-982-1060	
University of the Ryukyus	Molecular Life Science Research Facility	Nishihara Town	Functional Genomics; Molecular Biotechnology; Environmental and Biological Information; Vaccinology and Vaccine Immunology; and Molecular Microbiology	098-895-8943	
	Center for Research Advancement and Collaboration		Research and development, and collection and provision of information on analytics/measurement technologies	098-895-8967	
	University of the Ryukyus Center for the Promotion of Industry-Academic-Government Collaborations		The University of the Ryukyus research activities include supporting research and development with non-affiliated institutions outside the university, supporting the protection and utilization of intellectual property, and supporting enterprise.	098-895-8031 098-895-8597	

## Okinawa Institute of Science and Technology Graduate University (OIST)

The Okinawa Institute of Science and Technology Graduate University is a graduate university offering world-class research and educational standards in the field of natural sciences. It was established in November 2011, after receiving approval from the Ministry of Education, Culture, Sports, Science and Technology to establish an incorporated educational institution, and opened its doors in September 2012. For educational and research activities, interdisciplinary research projects that combine the fields of neuroscience, molecular, cellular, and developmental biology; mathematical and computational sciences; environmental and ecological sciences; physics; chemistry, and engineering and applied science are being carried out. It is anticipated that a cluster of intellectual industries will be formed around the facility by attracting corporate research institutes and venture companies.



## National Institute of Technology, Okinawa College

The National Institute of Technology, Okinawa College (NIT Okinawa) comprises four departments: Mechanical Systems Engineering, Information and Communications Systems Engineering, Media Information Engineering, and Bioresources Engineering. Through five years of consistent education, the college nurtures creative and practical engineers who can contribute to society with a highly humane, ethical, and international outlook in addition to expertise and technical training. With its solid educational system, NIT Okinawa is contributing to industrial growth in Okinawa through training programs and technology exchange/consultation opportunities in collaboration with local governments and industries.





Details regarding incubation facilities, etc.



Okinawa Health Biotechnology Research & Development Center

The Okinawa Health Biotechnology Research & Development Center is an incubation facility that conducts research and development regarding health foods and pharmaceutical drugs, with the purpose of promoting industrial development in Okinawa.

Rental lab	Area (㎡):	20.32㎡~167.74㎡	Inquiries:098-934-8435
	Rent (monthly):	¥2,160 per ㎡	Tenancy period: 5 years
	Number of rooms:	16	

Main support	<ul style="list-style-type: none"><li>•Explanations on operating equipment, technical consultations</li><li>•Advice on development of health food products and technical elements of ingredient analysis</li><li>•Support for commercialization, advice on product development</li></ul>				
Main machinery and instruments	<p>Okinawa Health Biotechnology Research &amp; Development Center offers a variety of equipment that organizations can use to carry out research and development or improve their production technology. (Tax exemption for machine usage fees available)</p> <table><tr><td>Analysis instruments</td><td>Nuclear magnetic resonance apparatus, liquid chromatography quadrupole mass spectrometer, gas chromatography-mass spectrometer, time-of-flight tandem mass spectrometer, DNA sequencer, amino acid analyzer, etc.</td></tr><tr><td>Proof-of-concept equipment</td><td>Jar fermenter (90L, 600L), disk-type centrifugal separator, sterilizer, powder sterilization device, coarse grinder, pneumatic pulverizer, fine grinder, low-temperature dryer, etc.</td></tr></table>	Analysis instruments	Nuclear magnetic resonance apparatus, liquid chromatography quadrupole mass spectrometer, gas chromatography-mass spectrometer, time-of-flight tandem mass spectrometer, DNA sequencer, amino acid analyzer, etc.	Proof-of-concept equipment	Jar fermenter (90L, 600L), disk-type centrifugal separator, sterilizer, powder sterilization device, coarse grinder, pneumatic pulverizer, fine grinder, low-temperature dryer, etc.
Analysis instruments	Nuclear magnetic resonance apparatus, liquid chromatography quadrupole mass spectrometer, gas chromatography-mass spectrometer, time-of-flight tandem mass spectrometer, DNA sequencer, amino acid analyzer, etc.				
Proof-of-concept equipment	Jar fermenter (90L, 600L), disk-type centrifugal separator, sterilizer, powder sterilization device, coarse grinder, pneumatic pulverizer, fine grinder, low-temperature dryer, etc.				



Okinawa Bio Industries Center

Okinawa Bio Industries Center is a post incubation facility that offers support to businesses that are approaching the commercialization of research development and research results made using biotechnology, and we aim to further develop biotechnology related industries in Okinawa.

Rental lab	Area (㎡):	34㎡~232㎡	Inquiries:098-923-1768
	Rent (monthly):	¥2,400 per ㎡	Tenancy period: no limit
	Number of rooms:	31	

Main support	<p>Okinawa Bio Industries Center provides various forms of support through its industry-academia-government collaboration network.</p> <ul style="list-style-type: none"><li>•Advice from experts about matters such as practical use and exploration of sales routes</li></ul>
Use of equipment	<p>Okinawa Health Biotechnology Research &amp; Development Center has analysis equipment on site for organizations to use. (Organizations may be eligible for a fee reduction or exemption.)</p>



Okinawa Life Science Research Center

The Okinawa Life Science Research Center is a rental lab with the purpose of promoting and industrializing Okinawan technology in bio/life sciences that coordinates research and development with venture enterprises and research institutions, that has is the first P2 level facility for commercialization in the prefecture.

Rental lab	Area (㎡):	60.75㎡~243㎡	Inquiries:098-982-1060
	Rent (monthly):	¥2,404 per ㎡	Tenancy period: less than 1 year (renewable)
	Number of rooms:	16	

Main support	<p>Support for entrepreneurs</p> <ul style="list-style-type: none"><li>• Okinawa Life Science Research Center provides various forms of support for companies relocating to Okinawa, including support for entrepreneurs who have relocated to Okinawa, support for promotional activities, and matching with potential partners.</li></ul> <p>Support for companies</p> <ul style="list-style-type: none"><li>• 25% reduction of room rate for small and medium enterprises that have been in business for less than five years. *Conditions apply</li></ul>
Use of equipment	<p>Automated incubators, thermostatic shaking incubators, high-speed refrigerated centrifuges, centrifugal evaporators, microchip electrophoresis equipment, quadrupole mass spectrometers, pulse field electrophoresis equipment, low pressure chromatography, digital PCR, next-generation sequencer systems, animal testing facilities (with individual animal breeding control units), etc.</p>

Details regarding incubation facilities, etc.



Okinawa Institute of Science And Technology Graduate University (OIST)

Okinawa Institute of Science And Technology Graduate University (hereinafter referred to as OIST) aims to contribute to Okinawa's autonomous development and improving global science and technology through the implementation of internationally exceptional education and research regarding science and technology. Their innovation square/incubator aims to be a facility where entrepreneurs from OIST and anywhere from both Japan and the world, can collaborate with preexisting businesses and investors, to help realize innovation and visions regarding the ecosystem.

Rental lab	Area (㎡):	20㎡~25㎡
	Rent (monthly):	¥7,080~84,000
	<p>*You can rent by room, or by desk or bench *Membership fees not included *Organizations must sign up for membership to use the equipment. Inquiries:incubator-help@oist.jp</p>	

Facility/service fee list	
Type	Monthly
Exclusive desk	¥ 7,080
Exclusive office (20㎡)	¥ 51,200
Lab bench	¥ 22,200
Exclusive lab (25㎡)	¥ 84,000
Membership fee (per individual)	¥ 2,500



OIST website

Shared facilities and equipment	Services for members
<ul style="list-style-type: none"><li>•Shared research equipment (refrigerators, culturing equipment, centrifugal separators)</li><li>•Meeting rooms for up to 8 people (Zoom conference equipment, projector, screen)</li><li>•Event space for up to 25 people (40m²)</li><li>•Conference rooms in OIST Conference Center Access to event space (additional usage fee applies)</li><li>•Wi-Fi, multifunction printers</li><li>•Soundproofed phone booths</li><li>•Shared kitchen</li><li>•Parking area</li></ul>	<ul style="list-style-type: none"><li>•Access to members' and investors' network</li><li>•Participation in entrepreneur development events held by OIST</li><li>•Access to the café and convenience store on campus</li><li>•Access to OIST's shared equipment (additional usage fee applies)</li><li>•Registration</li><li>•Posting on OIST website</li><li>•Access to experts for patenting, funding and staffing</li></ul>



University of the Ryukyus Center for the Promotion of Industry-Academic-Government Collaborations

University of the Ryukyus' research activities include support for research and development by outside organizations (such as those in the private sector), support for protection and use of intellectual property, and support for companies. The purpose of this work is to contribute to regional development and vitalization of the university's education, research and development activities.

Fees, etc.
1) Use of the building for industry-academia-government collaborations: 1,570 yen per m² per month (including utilities) Office area only: 11 rooms, 17-66m² Laboratories: 2 rooms, 10.5m², 21m²
2) General regional revitalization research building: 1,620 yen per m2 per month (excluding utilities) Office area only: 11 rooms, 21-42m² Laboratories: 2 rooms, 20m², 41m²
Both buildings are for industry-academia-government collaboration activities conducted at University of the Ryukyus, and are available for joint research between outside organizations such as private companies and faculty and other parties affiliated with the university (including students) or for application of research results.
*Applications to use the facilities in the 2023 academic year are now closed, but may reopen later if a room becomes available.



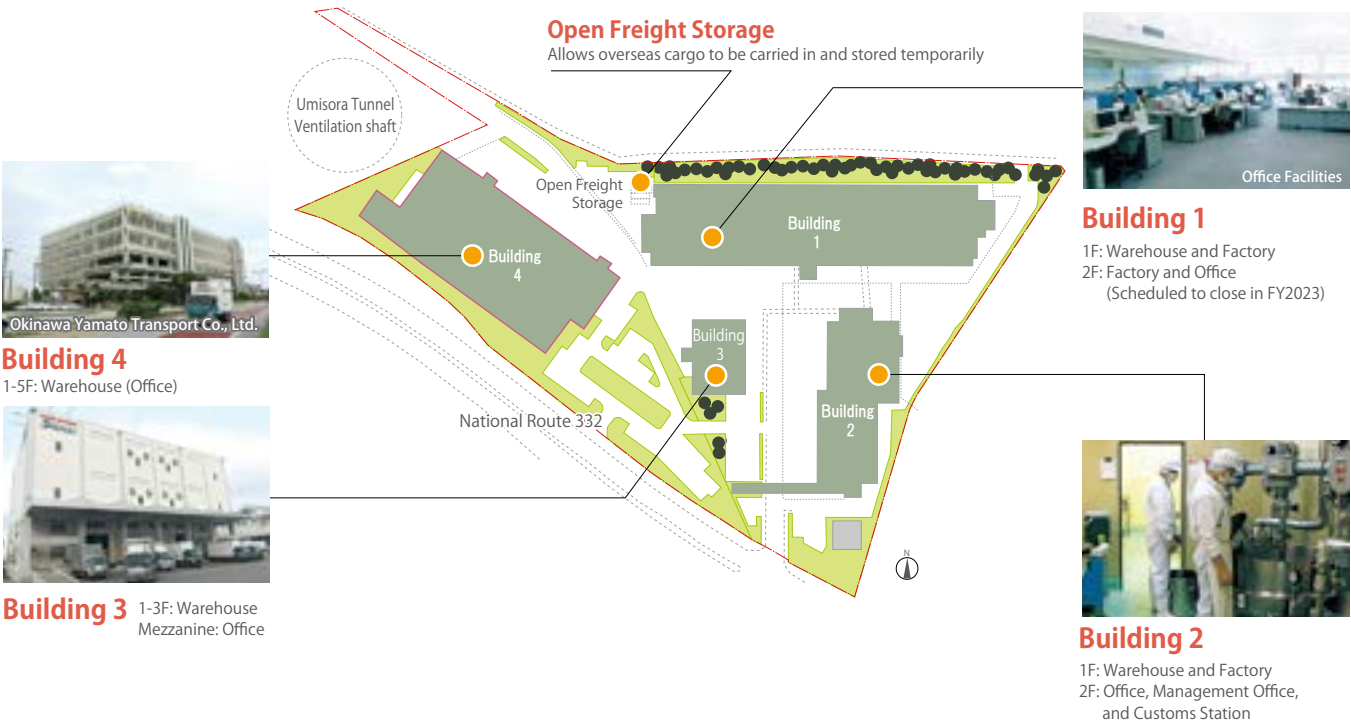
15 Local Businesses (International Logistics Hub Industrial Agglomeration Area Naha)

10 local businesses (excluding duplicates) (as of April 2023)

List of Companies Present (as of April 2023)

Building Number	Number of companies	Company Name	Business Types	Industry	Occupancy Date
Building 1	1	Taira Trading Company	Souvenir Wholesale	Wholesale Industry	July 1st, 1988
	2	Okinawa Clover	Manufacturing of Canned Vegetables and Preserved Agricultural Foods	Manufacturing Industry	November 1st, 1994
	3	Okinawa Kuyu	Import Agent (Customs) and Assembly and Shipping of Air Cargo	Land Freight Transportation Industry	June 1st, 2002
Building 2	4	Nihon Kurumaebi Youshoku	Import, Wholesale, and Manufacturing of Agricultural, Livestock, and Marine Products	Wholesale Industry	July 1st, 1988
	-	Okinawa Kuyu	Import Agent (Customs) and Assembly and Shipping of Air Cargo	Land Freight Transportation Industry	June 1st, 2002
	5	Nissin	Creation of Import and Export Documents and Customer Support	Trade Support Industry	May 20th, 2010
	6	Project Ryukyu	Import, Export, and Sales of Electronic Devices	Wholesale Industry	July 1st, 2013
	7	STO Express Japan	Customs and Operations for Cargo Transport Between Japan and China	Trade Support Industry	November 17th, 2014
Building 3	8	Sojitz Royal In-flight Catering Co., Ltd.	Manufacturing of In-flight Meals	Manufacturing Industry	December 1st, 2014
	9	Anshin	Automobile Transport and Warehousing of General Cargo	Land Freight Transportation Industry	September 1st, 2016
	10	Okinawa Yamato Transport Co., Ltd.	Automobile Transport, Distribution Transport, and Warehousing of General Cargo	Land Freight Transportation Industry	January 15th, 2013

Site for the Facilities (area of 40,266.94m<sup>2</sup>)



16 Local Businesses (formerly the Special Free Trade Zone)

84 local businesses (excluding duplicates) (as of February 2023)

[Breakdown]  
Rental factories for general manufacturing : 38companies (Of which 1 company is a repetition.)  
Rental factories for highly technical manufacturing : 5 companies  
Rental factories for forges and foundries : 11 companies  
Subdivided land : 33 companies (Of which there is 4 companies are repetitions.)

Local business list (as of February 2023)

Name	Building number/ classification	Industry type	Company name	Description of Business	Date of establishment
Rental factory	# 1	Manufacturing	Daikyo Giken-Kogyo Co., Ltd.	Industrial adhesive manufacturing	Feb. 2007
	# 2	Manufacturing	Sankikatawaku Kogyo Co., Ltd.	Wooden concrete mold manufacturing and sales	Mar. 2016
	# 3	Manufacturing	SOK Co., Ltd.	Semiconductor manufacturing equipment part (flow guage) manufacturing	Oct. 2010
	# 4	Manufacturing	Okinawa Tokyo Keiso Co., Ltd.	Semiconductor manufacturing equipment flow guage manufacturing	Jul. 2011
	# 6	Manufacturing	Shiba Sangyo Co., Ltd.	Wooden housing precut manufacturing/sales	Jun. 2015
	# 7	Manufacturing	Nippura Co., Ltd.	Large aquarium acrylic panel manufacturing	Nov. 2003
	# 8	Manufacturing	NMT Co., Ltd.	Manufacture and sale of precision polishing jigs for silicon wafers, etc. for semiconductors	Nov. 2006
	# 9	Manufacturing	Cellmedica Co., Ltd.	Manufacture of fucoxanthin (a brown algae carotenoid pigment)	Oct. 2019
	# 10	Manufacturing	Masahiro Distillery Co., Ltd.	Production and sale of liqueur made from awamori	Oct. 2021
	# 11	Manufacturing	Uminchu Okinawa Co., Ltd.	Manufacturing and sales of original T-shirts	Sep. 2003
	# 14	Manufacturing	NTI Co., Ltd.	Development and manufacturing of motor vehicle parts (carbon nano-tubes), and plastic mold prototype production	Feb. 2013
	# 16	Manufacturing	EM Research Organization Co., Ltd.	Manufacturing and sales of beverages	May 2010
	# 17	Manufacturing	Advance Co., Ltd.	Processing and manufacturing precision equipment for copying machines, digital cameras, automobile parts, and metallic product prototypes	Nov. 2012
	# 18	Manufacturing	Ryukyu Beverage Co., Ltd.	Manufacturing and sales of beverages	Apr. 2014
	# 19	Manufacturing	Presea Co., Ltd.	Manufacturing and sales of processed products, such as carbon for items such as high temperature vacuum furnace components, and semiconductor components	Mar. 2006
	# 20	Manufacturing	Toy Factory International Co., Ltd.	Development and manufacturing of camping and special use vehicles	Feb. 2008
	# 21	Manufacturing	Okinawa Kubota Chemix Co., Ltd.	Synthetic resin pipe manufacturing	Oct. 2015
	# 22	Manufacturing	SPARK Ltd.	Manufacture, sales, and tuning of air guns and air gun-related products; wholesaling of related products	Aug. 2021
	# 23	Manufacturing	Fujitaka Creation Co., Ltd.	Manufacturing and sale of clothing and accessories	Oct. 2014
	# 24	Manufacturing	Nanosystem Solutions Co., Ltd.	Development and manufacturing of semiconductor inspection equipment, and maskless exposure apparatuses	Sep. 2014
	# 25	Manufacturing	Ume Kobo	Manufacturing of confectionery	May 2016
	# 26	Manufacturing	Nissho Inc.	General aluminum construction material and residential equipment manufacturing	Feb. 2015
	# 28	Manufacturing	Enrich Food Co., Ltd.	Manufacturing refrigerating technology using proton freezing and frozen foods made using it	Feb. 2015
	# 29 ①	Manufacturing	Accord Co., Ltd.	Manufacturing and sale of industrial machinery/ covers for machine tools	Jan. 2018



Name	Building #, Classification, etc.	Industry type	Company name	Description of Business	Date of establishment
Rental factory	#29㉔	Manufacturing	ASAP Ltd. Co.	Manufacturing of semiconductor manufacturing equipment	Sep. 2018
	#30㉑	Manufacturing	Sankyou Carbon Co., Ltd.	Manufacture of carbon and graphite products	Apr. 2017
	#30㉒	Manufacturing	Waqua Inc.	Manufacturing and sales of household water purifiers and small-scale desalination equipment	Mar. 2016
	#31	Manufacturing	ADO Co., Ltd.	Manufacture of electromagnetic valves and flow sensors for medical equipment (dialysis machines, etc.)	Feb. 2016
	#32	Manufacturing	Mitaka Koki Ltd. Co., Ltd.	Manufacturing of medical optical equipment (microscopes for surgery, etc.)	Oct. 2016
	#33	Manufacturing	Isel Okinawa Co., Ltd.	Manufacture of elemental parts (Million Guide) for semiconductors, liquid crystals, organic ELs and more manufacturing equipment components	Jun. 2018
	#34	Manufacturing	CAP Co., Ltd.	Manufacturing and sales of semiconductor/ printed circuit board manufacturing equipment	Jul. 2016
	#35	Manufacturing	FMD .Co., Ltd.	Development and manufacture of medical devices (guidewires)	Nov. 2019
	#36	Manufacturing	Okiko Co., Ltd.	Bread and confectionery manufacturing industry	Jun. 2021
	#37	Manufacturing	Core Material Co., Ltd.	Production of plastic and resin medical products	May 2022
	#38	Manufacturing	SKAN JAPAN Co., Ltd.	Manufacture and sale of pharmaceutical product (isolator) manufacturing equipment	Aug. 2019
	#39	Manufacturing	Shoritsu FA Engineering Co., Ltd.	Manufacturing of electrical tools and equipment (in-line type/cell production soldering device)	May 2018
	#40	Manufacturing	Neuroceuticals Okinawa Inc.	Manufacture of medical devices (guidewires), and sub-contracts for sterilization inspections of medical equipment	Jun. 2018
	#41	Manufacturing	Takagi Seisakusho K.K.	Automotive parts/accessories manufacturing industry	Apr. 2021
	#42	Manufacturing	I-PEX Inc.	Production of press molded parts and automated equipment	Apr. 2022
Leased factories for high-tech manufacturing	#1	Manufacturing	Okinawa-Shibuya Co., Ltd.	Manufacture of semiconductor inspection equipment, etc. and parts for bottling systems, etc.	Aug. 2013
	#2 Section 1	Manufacturing	Curelabo Co., Ltd.	Bagasse powder production	Feb. 2023
	#2 Section 2	Manufacturing	Ikeda Precision Industries Co., Ltd.	Processing and production of manufacturing machinery and equipment parts (stainless steel)	Aug. 2013
	#2 Section 3	Manufacturing	Hokutyou Industries Co., Ltd.	Manufacturing and sales of various industrial plastic parts such as food machines, medical apparatus, pharmaceutical apparatus, and machine tools	Aug. 2013
	#3	Manufacturing	Enagic International	Development, manufacturing, and sale of medical and healthcare devices	Feb. 2022
Support facilities for forges and foundries	# 1 Section 1 +2	Manufacturing	Ogaki Seiko Co., Ltd.	Manufacturing and sales of honeycomb catalyst converters (exhaust) for automobiles, industrial machinery, and electronic parts	Dec. 2010
	# 1 Section 3	Information and service industry	NTT DATA Engineering Systems Co., Ltd.	Design and production of CAD/Cam for molds	Dec. 2011
	# 1 Section 4	Manufacturing	Monozukuri Network Okinawa Inc. (One company)	Human resource development for manufacturing, research and development, and contract processing,engineering	Mar. 2012
	# 1 Section 5	Information and service industry	NTT DATA Engineering Systems Co., Ltd.	Development of automated processing systems, etc.	Apr. 2020
	# 2 Section 1	IT & Prototypes & Development	Digital Design Service Co., Ltd.	Mold design CAD, human resource development	Feb. 2015
	# 2 Section 2	Information and service industry	FUTU-RE Co., Ltd.	Development of automatic driving systems	Apr. 2022
	# 2 Section 3	Manufacturing	SONY Group Corporation	Vehicle development	Sep. 2020
	# 2 Section 4	Manufacturing	Body Shop Car Manicure Co., Ltd.	Manufacture of FRP automobile parts	Feb. 2020
	# 3 Section 1	Manufacturing	CKK Okinawa Co., Ltd.	Manufacturing and regrinding of carbide drills and endmills	Jan. 2016
	# 3 Section 2	Manufacturing	Jowa Co., Ltd.	Manufacturing of machine parts comprised of stainless steel, aluminum, resin, etc. and design/production of press molds	Jan. 2015
	# 3 Section 3	Manufacturing	Emade Co., Ltd.	Manufacturing of electric car parts and special car parts	Sep. 2017
	# 3 Section 4	Manufacturing	I-PEX Co., Ltd.	The manufacture of high-speed press molds	Apr. 2019

Name		Industry type	Company name	Description of Business	Date of establishment
Land for sale/rental	1	Manufacturing	Acrorad Co., Ltd.	Manufacturing of semiconductors for radiation detection	Oct. 1999
	2	Manufacturing	Convault Japan Co., Ltd.	Manufacturing and sale of ground-mounted fuel tanks	May 2003
	3	Wholesale	Wako Trading Co., Ltd.	Print processing and wholesale of products such as T-shirts	Feb. 2006
	4	Manufacturing	Ryukyu Awamori Sake Village (Cooperative Association)	Production of traditional Awamori sake through long-term storage and sales of this beverage	Apr. 2011
	5	Manufacturing	NTI Co., Ltd.	Development and manufacturing of carbon nanotubes (CNT) related products and the manufacturing of plastic mold prototypes	Feb. 2013
	6	Wholesale	C & D Co., Ltd.	Wholesale sales of imported furniture, building materials, etc.	Feb. 2013
	7	Engineering Institute	Thomas GK Technical Research Institute Co., Ltd.	Research, development, design, and sales of environmentally-conscious incinerators	Oct. 2013
	8	Manufacturing	Japan Food and Culture Kakehashi Company Co., Ltd.	Manufacturing and sales of processed products derived from domestic agriculture, forests, and marine resources	Jan. 2015
	9	Manufacturing	Kawashima Group Co., Ltd.	Manufacturing of healthy food	Jul. 2015
	10	Manufacturing	SKAN JAPAN Co., Ltd.	Manufacturing and sales of pharmaceutical manufacturing machines (isolators)	Mar. 2016
	11	Special real estate leasing	Ryukyu Kaiun Kaisha Sea Transport Company Co., Ltd.	Operation of a 3-temperature zone distributio center	Mar. 2017
		Warehouse	Ryukkai Logistics Co., Ltd.	Operation of a 3-temperature zone distributio center	
	12	Manufacturing	BEAC Okinawa Co., Ltd.	Manufacturing equipment for manufacturing, electronic components (flexible printed circuit, boards)	Mar. 2017
	13	Wholesale	Kobelco Construction Machinery Japan Co., Ltd.	Sales and maintenance of new/ used cars for civil engineering and construction	Mar. 2017
	14	Manufacturing	FMD Co., Ltd. (Okinawa Factory)	Manufacturing of guide wires for endovascular treatment	May 2017
	15	Manufacturing	INOAC Ryukyu Co., Ltd.	Manufacturing of urethane foam (bedding, furniture, industrial materials, etc.) and related products	Sep. 2017
	16	Electricity industry	Okinawa Uruma New Energy Co., Ltd.	Operations of biomass power plants	Oct. 2017
	17	Wholesale	Suzuki Jihan Automobiles Okinawa Co., Ltd.	Vehicle storage yard and vehicle delivery/ maintenance (commercialization plant)	Nov. 2017
	18	Special real estate leasing	Yoshikawa Transport Co., Ltd.	Sales warehouse rentals	Feb. 2017
		Warehouse	Maruyama Logistics Co., Ltd.	Operation of a sales warehouse	Feb. 2017
	19	Manufacturing	MIZUTOMI Corporation	Manufacturing of food products (meat, etc.)	Jan. 2018
	20	Road freight transport industry	Okinawa Total Logistics Co., Ltd.	Transportation of materials and machine tools	Mar. 2018
	21	Manufacturing	Yashio Kenzaikogyo Industries Co., Ltd.	Manufacturing of metal products for construction	Apr. 2018
	22	Wholesale	Seawide Co., Ltd.	Building materials wholesale	Jul. 2018
	23	Manufacturing	Bijuu Co., Ltd.	Manufacturing of confectionery products and contract manufacturing	Aug. 2018
	24	Manufacturing	South Product Co., Ltd.	Manufacturing of fucoidan and health foods	Aug. 2018
	25	Manufacturing	ADO Co., Ltd.	Manufacturing of solenoid valves and flow sensors for equipment used in medical/enviromental analysis	Jan. 2019
	26	Manufacturing	Tiger Global Co., Ltd.	Manufacture of rotary penetration steel pipe piles for building foundations, plastic products, etc.	Jun. 2019
	27	Warehouse	OTK Co., Ltd.	Operation of a sales warehouse	Mar. 2020
	28	Wholesale	ArnestWing K.K.	Architectural and civil engineering work; building materials wholesale business	Feb. 2021
	29	Warehouse	C&D Inc.	Work related to purchasing, management, and transport of imported furniture, etc.	Feb. 2021
	30	Manufacturing	JOeB K.K.	Manufacture of electrically assisted bicycles (e-bikes)	Oct. 2021
	31	Manufacturing	Sanko Co., Ltd.	Manufacturing of plastic materials handling equipment	Mar. 2022
	32	Manufacturing	ASKA Co., Ltd.	Design, manufacturing, and export of equipment for automated assembly lines of automotive parts	Mar. 2022
	33	Wholesale	Kinko Heavy Machinery	Wholesale of construction and mining machinery	Mar. 2022



(as of February 2023)

