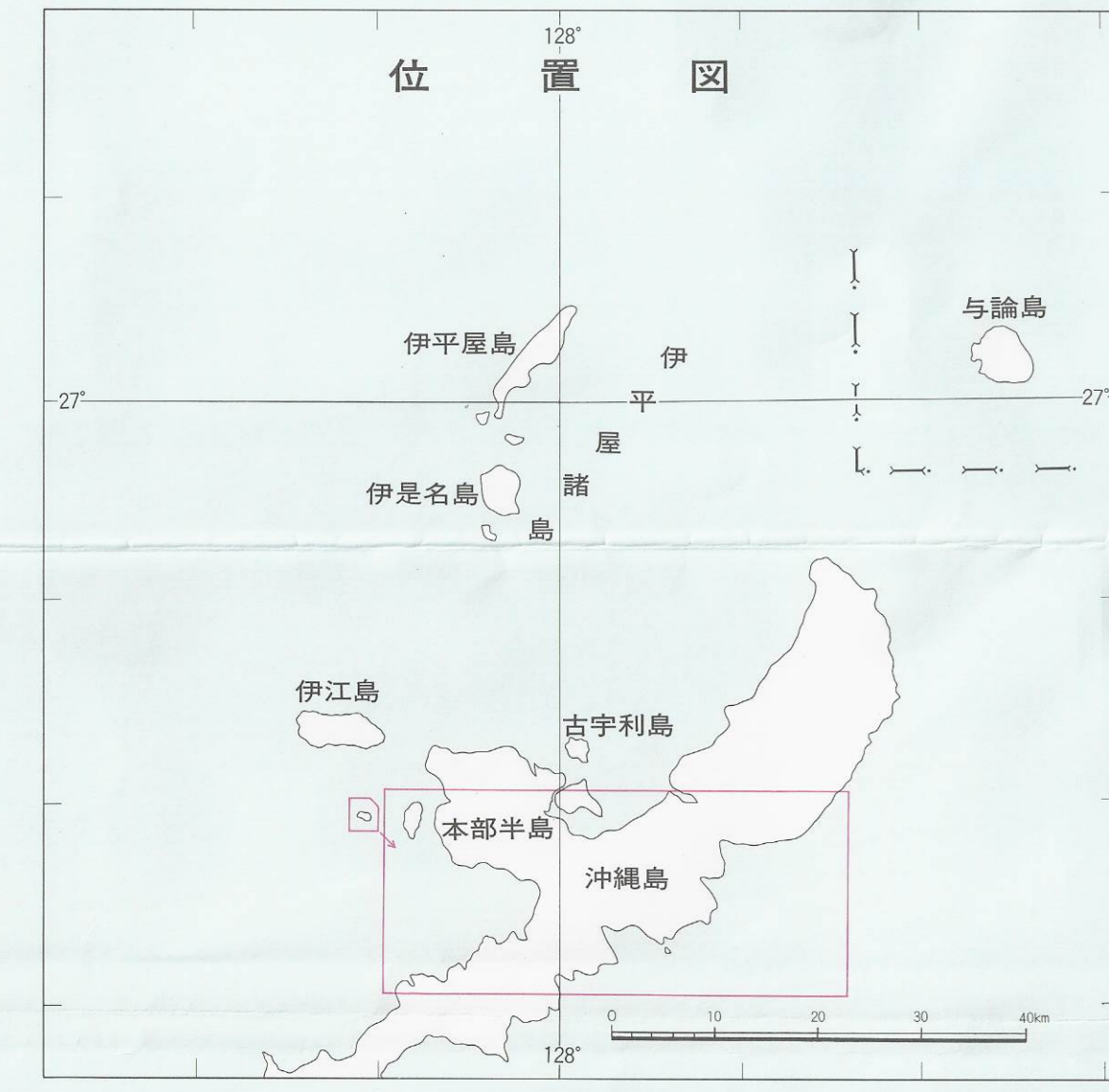
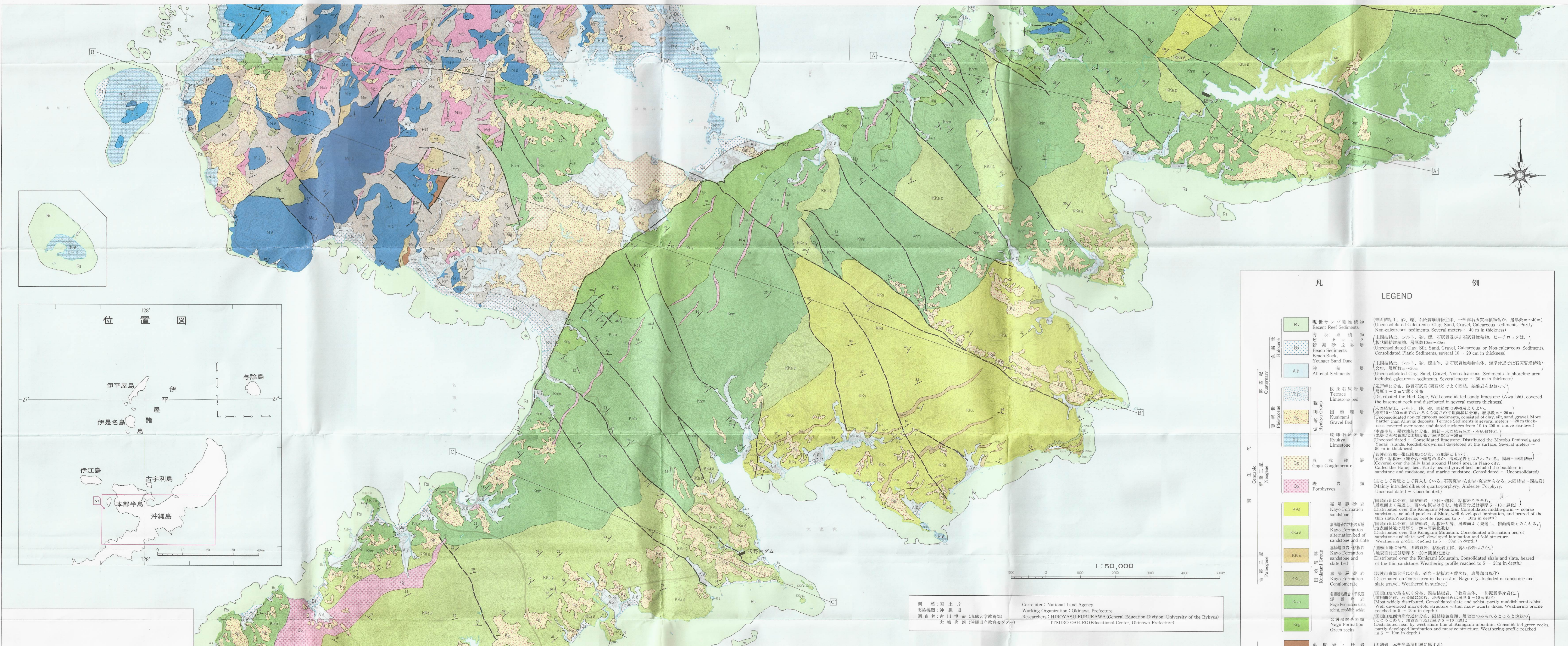


表層地質図 Subsurface Geological Map

沖縄本島北部(国頭平良・名護) Northern Part of Okinawajima (KUNIGAMI TAIRA-NAGO DISTRICT)

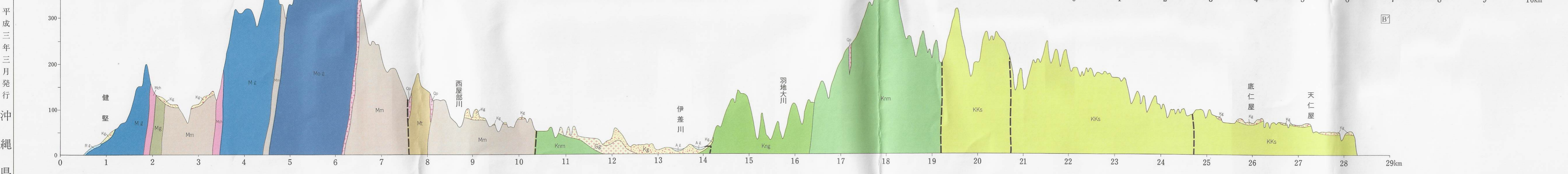
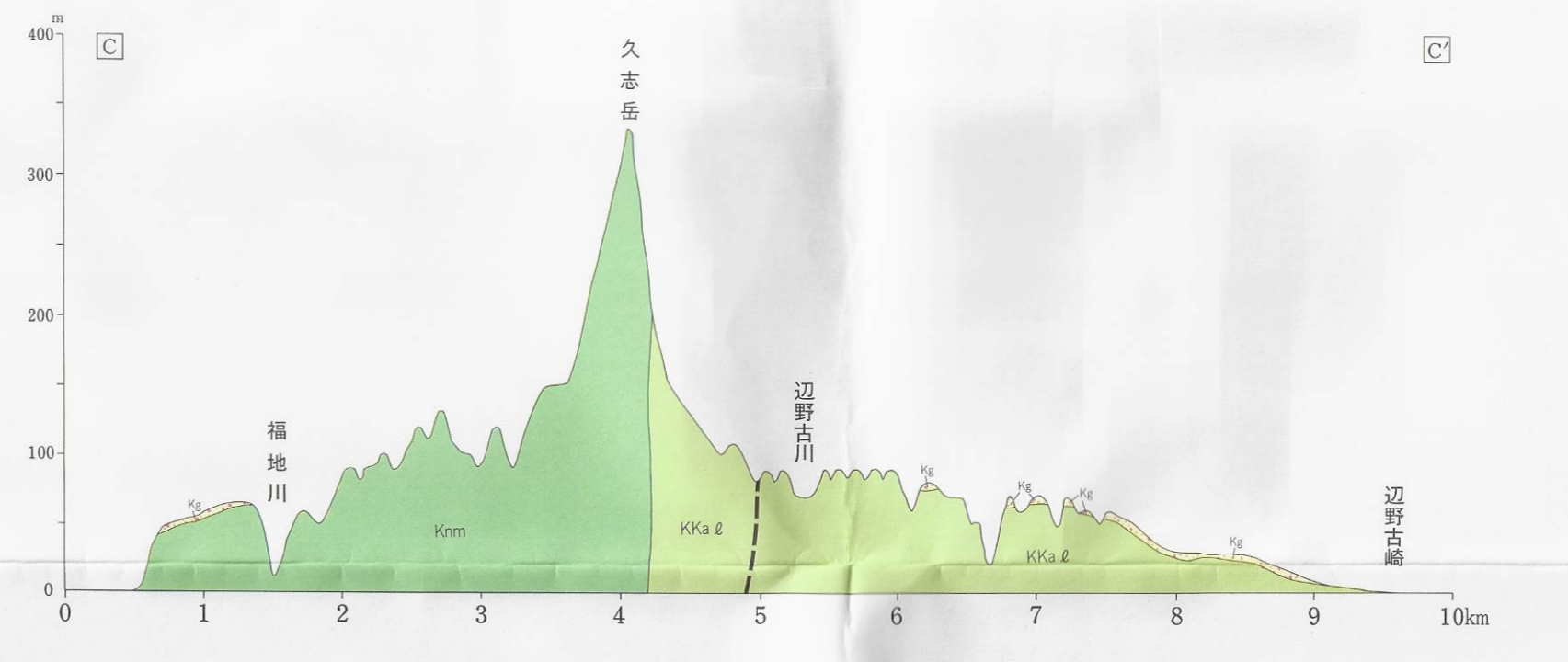
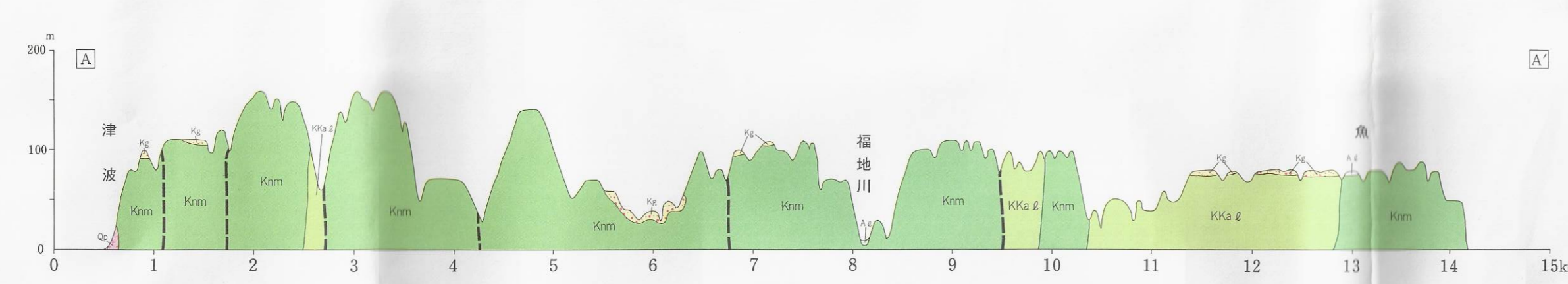


調査: 国土庁
 実施機関: 沖縄県
 調査者: 石川博志(琉球大学教育センター)
 大城進典(沖縄県立教育センター)

Correlator: National Land Agency
 Working Organization: Okinawa Prefecture
 Researchers: HIROYASHI FURUKAWA(General Education Division, University of the Ryukyus)
 ITSURO OSHIRO(Educational Center, Okinawa Prefecture)

凡例 LEGEND

Rs	最近サンゴ堆積物 Recent Reef Sediments	(未固結粘土、砂、礫、石灰質堆積物主体、一部非石灰質堆積物を含む。層厚数m-40m) (Unconsolidated Calcareous Clay, Sand, Gravel, Calcareous sediments, Partly Non-calcareous sediments. Several meters - 40 m in thickness)
Mn	海浜堆積物 Beach Sediments	(未固結粘土、シルト、砂、礫、石灰質及び非石灰質堆積物、ビーチロックスを含む。層厚数10m-20m) (Unconsolidated Clay, Silt, Sand, Gravel, Calcareous or Non-calcareous Sediments, Consolidated Plank Sediments, several 10 - 20 cm in thickness)
Ae	沖積層 Alluvial Sediments	(未固結粘土、シルト、砂、礫主体、非石灰質堆積物主体、海岸付近では石灰質堆積物を含む。層厚数m-30m) (Unconsolidated Clay, Sand, Gravel, Non-calcareous Sediments. In shoreline area included calcareous sediments. Several meter - 30 m in thickness)
Tr	段丘石灰質層 Terrace Limestone bed	(段丘峰に分布。砂質石灰質(礫石状)でよく固結。基盤岩をおおって。厚さ1-2mで厚く分布) (Distributed the Hill Cape. Well-consolidated sandy limestone (Awa-ishi), covered the basement rock and distributed in several meters thickness)
Km	国頭層 Kunigami Group	(未固結粘土、シルト、砂、礫。風化は中等程度より。厚さ10-200mまで幅広い。平面的に分布。層厚数m-20m) (Unconsolidated non-calcareous sediments, consisted of clay, silt, sand, gravel. More harder than Alluvial deposits. Terrace Sediments in several meters - 20 m thickness covered over some unbedded surfaces from 10 to 200 m above sea level)
Ks	琉球石灰岩 Ryukyu Limestone	(未固結 - 固結石灰岩。風化は中等程度。分布は本部半島と名護市。厚さ数m-30m) (Unconsolidated - Consolidated limestone. Distributed the Motobu Peninsula and Nago city. Weathering profile reached to 5 - 30 m in depth)
Kc	島嶼礫層 Gona Conglomerate	(名護市周辺に分布。砂質石灰質。固結。厚さ数m-10m) (Covered over the hilly land around Haneji area in Nago city. Called the Haneji bed. Partly banded gravel bed included the boulders in sandstone and mudstone, and marine mudstone. Consolidated - Unconsolidated)
Kp	斑岩 Porphyries	(主として名護市に貫入している。石英斑岩(安山岩)由来のもの。未固結 - 固結) (Mainly intruded dikes of quartz porphyry, Andesite, Porphyry. Unconsolidated - Consolidated)
Kkg	嘉陽層砂岩 Kayo Formation sandstone	(国頭山脈に分布。固結砂岩。中粒-粗粒。厚さ数m-10m) (Distributed over the Kunigami Mountain. Consolidated middle grain - coarse sandstone, included patches of siltite, well developed lamination, and beared of the thin slate. Weathering profile reached to 5 - 10 m in depth)
Kka	嘉陽層砂岩互層 Kayo Formation alternation bed of sandstone and slate	(国頭山脈に分布。固結砂岩。粘板岩互層。厚さ数m-10m) (Distributed over the Kunigami Mountain. Consolidated alternation bed of sandstone and slate, well developed lamination and fold structure. Weathering profile reached to 5 - 20 m in depth)
Kkn	嘉陽層泥岩 Kayo Formation mudstone and slate bed	(国頭山脈に分布。固結泥岩。粘板岩互層。厚さ数m-10m) (Distributed over the Kunigami Mountain. Consolidated shale and slate, beared of the thin sandstone. Weathering profile reached to 5 - 20 m in depth)
Kko	嘉陽層礫岩 Kayo Formation conglomerate	(名護市東部に分布。砂質石灰質。厚さ数m-10m) (Distributed on Ohura area in the east of Nago city. Included in sandstone and slate gravel. Weathered in surface)
Km	名護層砂岩 Nago Formation sandstone	(国頭山脈に分布。固結砂岩。中粒-粗粒。厚さ数m-10m) (Distributed over the Kunigami Mountain. Consolidated middle grain - coarse sandstone, included patches of siltite, well developed lamination, and beared of the thin slate. Weathering profile reached to 5 - 10 m in depth)
Kg	名護層緑色岩 Nago Formation Green rocks	(国頭山脈に分布。固結緑色岩。厚さ数m-10m) (Distributed near the west shore line of Kunigami mountain. Consolidated green rocks, partly developed lamination and massive structure. Weathering profile reached to 5 - 10 m in depth)
Wss	粘板岩・砂岩 Slat and Sandstone	(固結。本部半島沖積層に属する) (Consolidated rocks, belong to the Wakugawa Formation in Motobu Peninsula)
Mch	チャート Chert	(固結。本部半島沖積層に属する) (Consolidated rocks, belong to the Yonamine Formation in Motobu Peninsula)
Mn	砂岩・頁岩互層、砂岩、頁岩、粘板岩からなり硬質な石灰質のレンズ・薄層を伴った変成層。砂岩・頁岩互層、砂岩、頁岩、粘板岩からなり硬質な石灰質のレンズ・薄層を伴った変成層。厚さ数m-10m) (Alternation bed of sandstone and shale, alternation bed of sandstone and slate, sandstone, shale, slate, beared gravel bed, lense and thin bed of limestone. Consolidated)	
Mt	凝灰岩 Tuffaceous rocks	(固結。本部半島沖積層に属する) (Consolidated rocks, belong to the Yonamine Formation in Motobu Peninsula)
Mg	緑色岩 Green rocks	(固結。本部半島沖積層に属する) (Consolidated rocks, belong to the Yonamine Formation in Motobu Peninsula)
Nk	石灰岩 Limestone	(固結。本部半島沖積層に属する) (Consolidated rocks, belong to the Yonamine Formation in Motobu Peninsula)
Nl	石灰岩 Limestone	(固結。本部半島沖積層に属する) (Consolidated rocks, belong to the Nakijin Formation in Motobu Peninsula)
Nm	凝灰岩・一部チャートを含む Partly included chert	(固結。本部半島沖積層に属する) (Consolidated rocks, belong to the Nakijin Formation in Motobu Peninsula)
Nd	緑色岩 Green rocks	(固結。本部半島沖積層に属する) (Consolidated rocks, belong to the Nakijin Formation in Motobu Peninsula)
Nk	石灰岩 Limestone	(固結。本部半島沖積層に属する) (Consolidated rocks, belong to the Nakijin Formation in Motobu Peninsula)



平成三年三月発行 沖縄県