

# 6 Overview of International Distribution Base and Industry Cluster Zone Uruma/Okinawa District (Nakagusuku Bay Port Shinko District Industrial Park)



—— International Logistics Hub Industry Development Zone Uruma/Okinawa District 
 - - - - - Former Special Free Trade Zone 
 - - - - - IT Shinryo Park  
**1** Katsuren Castle (World Heritage Site) **3** Okinawa Mold Technology Institute **5** Okinawa Industrial Technology Center **7** Okinawa Life Science Research Center  
**2** Okinawa IT Shinryo Park **4** Okinawa Health Biotechnology Research & Development Center **6** Okinawa Biotechnology Business Support Center **8** Large shopping center (AEON)

## (1) Uruma/Okinawa District (Nakagusuku Bay Port Shinko District) — Overview

- Total area : 392.4ha
- Former General Industry Zone : 102.6ha
- International Logistics Hub : 122.4ha (Area for lease: 90.0ha) (formerly Uruma District)
- Wharf area : 24.4ha
- Harbor-related facilities area : 37.0ha
- Residential-use area : 37.1ha
- Other (green space, etc.) : 68.9ha



International Distribution Base and Industry Cluster Zone [ Uruma/Okinawa District ]

## (2) Regarding target industry sectors

In order to strategically promote the attracting of companies to the prefecture, we are doing more to attract — especially to the International Logistics Hub Industry Development Zone — industries that need to be near an airport or harbor, since companies in such industries can be expected to link up with other tenant companies and with companies elsewhere in the prefecture and can also be expected to generate outbound freight from Okinawa. We are working to bring together businesses of the types indicated below that are in industries that manufacture high-value-added products.

### ① Target Industry Sectors

Okinawa is looking for industry players to revitalize our Airport and port based industries. As a general rule, only companies which plan to ship and export 50% of their products or services outside Japan or Okinawa will be considered. For more information, please contact the person in charge.

Applicable category	Type of Business
Land for sale	○Manufacturing, warehousing, road freight forwarding, wholesaling, designated machinery repair, designated non-store retailing, designated real estate leasing, and aircraft maintenance (industries subject to the international logistics hub industrial concentration zone)
Leased factories for general manufacturing	Manufacturing
Leased factories for high-tech manufacturing	Manufacturing
Support facilities for forges and foundries	Forging- and foundry-related industries (molds, etc.).

### ② Industry Sectors Prioritized for Selection

- Okinawa is prioritizing the sectors which match the following criteria.
- Companies which use Naha Airport as their international logistics hub and manufactures products with high profit margins such as semiconductor and electronic-related products as well as Factory Automation and robotics-related products.
  - With the aim to develop an industry cluster in aviation, companies which manufacture or process parts and equipments for the aviation sector as well as suppliers of equipment and parts for avionics maintenance services.
  - Medical equipment manufacturing industry, including high-tech medical and biotechnology companies.
- Note: Other than those stated above, the Okinawan government will continuously gauge socioeconomic changes and add other sectors which show a promising future in driving the prefecture's economy to the list after considering their synergy with other existing local companies
- Companies actively introducing clean energy or DX
  - Companies contributing to the earning power of Okinawan companies through new business, new technology, etc.
  - Companies with potential to benefit Okinawa's economy through expansion of procurement in Okinawa (parts centers, Repair Center, Central Kitchen, etc.)

# 7 Local Businesses (formerly the Special Free Trade Zone)

83 local businesses (excluding duplicates) (as of March 2024)

[Breakdown]

- Rental factories for general manufacturing : 39 companies (of which 1 company is a repetition.)
- Rental factories for highly technical manufacturing : 5 companies
- Rental factories for forges and foundries : 11 companies (of which 1 company is a repetition.)
- Subdivided land : 34 companies (of which 1 company is a repetition.)

## Local business list (as of March 2024)

Name	Building number/ classification	Industry type	Company name	Description of Business	Date of establishment
Rental factory	# 1	Manufacturing	Daikyo Giken-Kogyo Co., Ltd.	Industrial adhesive manufacturing	Feb. 2007
	# 2	Manufacturing	Sankikatawaku Kogyo Co., Ltd.	Wooden concrete mold manufacturing and sales	Mar. 2016
	# 3	Manufacturing	SOK Co., Ltd.	Semiconductor manufacturing equipment part (flow guage) manufacturing	Oct. 2010
	# 4	Manufacturing	Okinawa Tokyo Keiso Co., Ltd.	Semiconductor manufacturing equipment flow guage manufacturing	Jul. 2011
	# 6	Manufacturing	Shiba Sangyo Co., Ltd.	Wooden housing precut manufacturing/sales	Jun. 2015
	# 7	Manufacturing	NIPPURA Co., Ltd.	Large aquarium acrylic panel manufacturing	Nov. 2003
	# 8	Manufacturing	NMT Co., Ltd.	Manufacture and sale of precision polishing jigs for silicon wafers, etc. for semiconductors	Nov. 2006
	# 9	Manufacturing	Cellmedica Co., Ltd.	Manufacture of fucoxanthin (a brown algae carotenoid pigment)	Oct. 2019
	# 10	Manufacturing	Masahiro Distillery Co., Ltd.	Production and sale of liqueur made from awamori	Oct. 2021
	# 11	Manufacturing	Uminchu Okinawa Co., Ltd.	Manufacturing and sales of original T-shirts	Sep. 2003
	# 14	Manufacturing	NTI Co., Ltd.	Development and manufacturing of motor vehicle parts (carbon nano-tubes), and plastic mold prototype production	Feb. 2013
	# 16	Manufacturing	EM Research Organization Co., Ltd.	Manufacturing and sales of beverages	May 2010
	# 17	Manufacturing	Advance Co., Ltd.	Processing and manufacturing precision equipment for copying machines, digital cameras, automobile parts, and metallic product prototypes	Nov. 2012
	# 18	Manufacturing	Ryukyu Beverage Co., Ltd.	Manufacturing and sales of carbonated drinks	Apr. 2014
	# 19	Manufacturing	Presea Co., Ltd.	Manufacturing and sales of processed products, such as carbon for items such as high temperature vacuum furnace components, and semiconductor components	Mar. 2006
	# 20	Manufacturing	Toy Factory International Co., Ltd.	Development and manufacturing of camping and special use vehicles	Feb. 2008
	# 21	Manufacturing	Okinawa Kubota Chemix Co., Ltd.	Synthetic resin pipe manufacturing	Oct. 2015
	# 22	Manufacturing	SPARK Ltd.	Manufacture, sales, and tuning of air guns and air gun-related products; wholesaling of related products	Aug. 2021
	# 23	Manufacturing	Fujitaka Creation Co., Ltd.	Manufacturing and sale of clothing and accessories	Oct. 2014
	# 24	Manufacturing	Nanosystem Solutions Co., Ltd.	Development and manufacturing of semiconductor inspection equipment, and maskless exposure apparatuses	Sep. 2014
	# 25	Manufacturing	Ume Kobo	Manufacturing of confectionery	May 2016
	# 26	Manufacturing	Nissho Inc.	General aluminum construction material and residential equipment manufacturing	Feb. 2015
	# 28	Manufacturing	Enrich Food Co., Ltd.	Manufacturing refrigerating technology using proton freezing and frozen foods made using it	Feb. 2015
	# 29 ①	Manufacturing	Accord Co., Ltd.	Manufacturing and sale of industrial machinery/ covers for machine tools	Jan. 2018

Name	Building #, Classification, etc.	Industry type	Company name	Description of Business	Date of establishment
Rental factory	#29②	Manufacturing	ASAP Ltd. Co.	Manufacturing of semiconductor manufacturing equipment	Sep. 2018
	#30①	Manufacturing	Sankyou Carbon Co., Ltd.	Manufacture of carbon and graphite products	Apr. 2017
	#30②	Manufacturing	Waqua Inc.	Manufacturing and sales of household water purifiers and small-scale desalination equipment	Mar. 2016
	#31	Manufacturing	ADO Co., Ltd.	Manufacture of electromagnetic valves and flow sensors for medical equipment (dialysis machines, etc.)	Feb. 2016
	#32	Manufacturing	Mitaka Koki Ltd. Co., Ltd.	Manufacturing of medical optical equipment (microscopes for surgery, etc.)	Oct. 2016
	#33	Manufacturing	Isei Okinawa Co., Ltd.	Manufacture of elemental parts (Million Guide) for semiconductors, liquid crystals, organic ELs and more manufacturing equipment components	Jun. 2018
	#34	Manufacturing	CAP Co., Ltd.	Manufacturing and sales of semiconductor/printed circuit board manufacturing equipment	Jul. 2016
	#35	Manufacturing	FMD .Co., Ltd.	Development and manufacture of medical devices (guidewires)	Nov. 2019
	#36	Manufacturing	Okiko Co., Ltd.	Bread and confectionery manufacturing industry	Jun. 2021
	#37	Manufacturing	Core Material Co., Ltd.	Production of plastic and resin medical products	May. 2022
	#38	Manufacturing	SKAN JAPAN Co., Ltd.	Manufacture and sale of pharmaceutical product (isolator) manufacturing equipment	Aug. 2019
	#39	Manufacturing	Shoritsu FA Engineering Co., Ltd.	Manufacturing of electrical tools and equipment (in-line type/cell production soldering device)	May. 2018
	#40	Manufacturing	Otsuka Clinical Solutions, Inc.	Manufacturing of medical devices (guide wires) and contracted medical device sterilization testing	Jun. 2018
	#41	Manufacturing	Takagi Seisakusho K.K.	Automotive parts/accessories manufacturing industry	Apr. 2021
	#42	Manufacturing	I-PEX Inc.	Development of green energy-related and other systems and provision of co-working factory	Apr. 2022
Leased factories for high-tech manufacturing	#1	Manufacturing	Okinawa-Shibuya Co., Ltd.	Manufacture of semiconductor inspection equipment, etc. and parts for bottling systems, etc.	Aug. 2013
	#2 Section 1	Manufacturing	Curelabo Co., Ltd.	Bagasse powder production	Feb. 2023
	#2 Section 2	Manufacturing	Ikeda Precision Industries Co., Ltd.	Processing and production of manufacturing machinery and equipment parts (stainless steel)	Aug. 2013
	#2 Section 3	Manufacturing	Hokuyou Industries Co., Ltd.	Manufacturing and sales of various industrial plastic parts such as food machines, medical apparatus, pharmaceutical apparatus, and machine tools	Aug. 2013
	#3	Manufacturing	Enagic International	Development, manufacturing, and sale of medical and healthcare devices	Feb. 2022
Support facilities for forges and foundries	# 1 Section 1+2	Manufacturing	Ogaki Seiko Co., Ltd.	Manufacturing and sales of honeycomb catalyst converters (exhaust) for automobiles, industrial machinery, and electronic parts	Dec. 2010
	# 1 Section 3	Information and service industry	NTT DATA Engineering Systems Co., Ltd.	Design and production of CAD/Cam for molds	Dec. 2011
	# 1 Section 4	Manufacturing	Monozukuri Network Okinawa Inc. (One company)	Human resource development for manufacturing, research and development, and contract processing,engineering	Mar. 2012
	# 1 Section 5	Information and service industry	NTT DATA Engineering Systems Co., Ltd.	Development of automated processing systems, etc.	Apr. 2020
	# 2 Section 1	IT & Prototypes & Development	Digital Design Service Co., Ltd.	Mold design CAD, human resource development	Feb. 2015
	# 2 Section 2	Information and service industry	FUTU-RE Co., Ltd.	Development of automatic driving systems	Apr. 2022
	# 2 Section 3	Manufacturing	SONY Group Corporation	Vehicle development	Sep. 2020
	# 2 Section 4	Manufacturing	Body Shop Car Manicure Co., Ltd.	Manufacture of FRP automobile parts	Feb. 2020
	# 3 Section 1	Manufacturing	CKK Okinawa Co., Ltd.	Manufacturing and regrinding of carbide drills and endmills	Jan. 2016
	# 3 Section 2	Manufacturing	Jowa Co., Ltd.	Manufacturing of machine parts comprised of stainless steel, aluminum, resin, etc. and design/production of press molds	Jan. 2015
	# 3 Section 3	Manufacturing	Emade Co., Ltd.	Manufacture, research and development of electric mobility and related parts	Sep. 2017
	# 3 Section 4	Manufacturing	I-PEX Co., Ltd.	Manufacturing of precision press molds	Apr. 2019

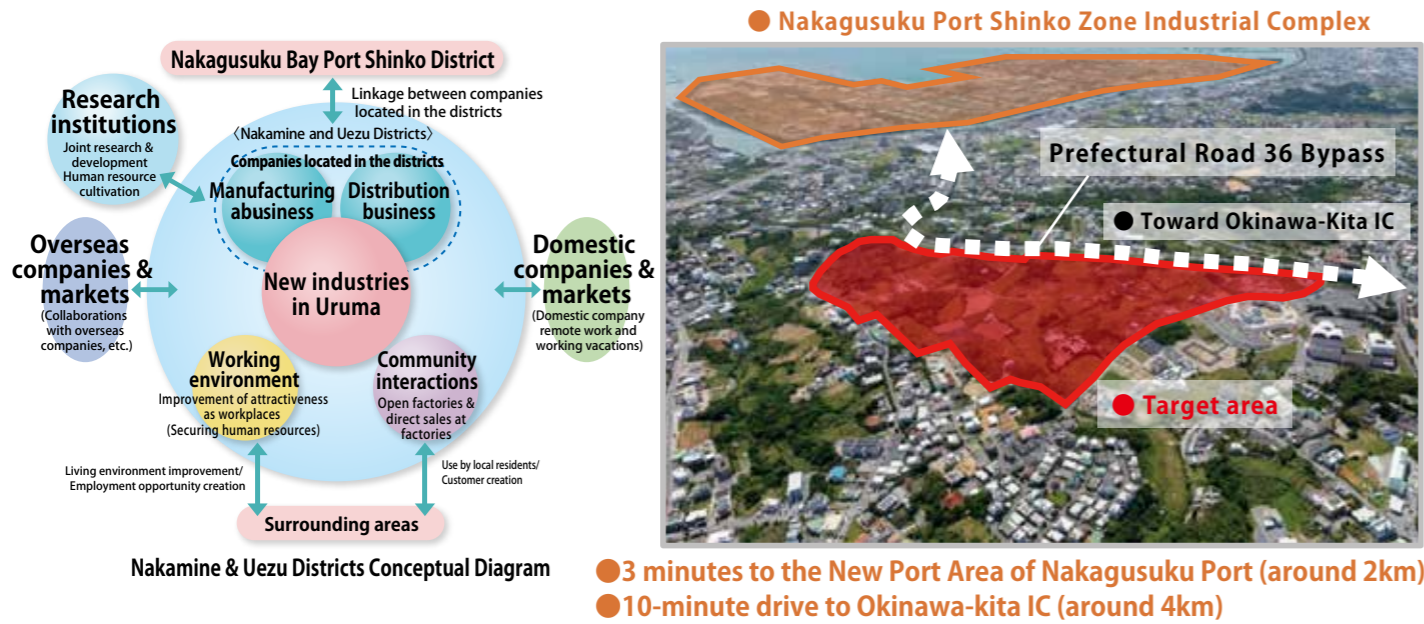
Name		Industry type	Company name	Description of Business	Date of establishment
Land for sale/rental	1	Manufacturing	AcroRad Co., Ltd.	Manufacturing of semiconductors for radiation detection	Oct. 1999
	2	Manufacturing	Convault Japan Co., Ltd.	Manufacturing and sale of ground-mounted fuel tanks	May 2003
	3	Wholesale	Wako Trading Co., Ltd.	Print processing and wholesale of products such as T-shirts	Feb. 2006
	4	Manufacturing	Ryukyu Awamori Sake Village (Cooperative Association)	Production of traditional Awamori sake through long-term storage and sales of this beverage	Apr. 2011
	5	Manufacturing	NTI Co., Ltd.	Development and manufacturing of carbon nanotubes (CNT) related products and the manufacturing of plastic mold prototypes	Feb. 2013
	6	Wholesale	C & D Co., Ltd.	Wholesale sales of imported furniture, building materials, etc.	Feb. 2013
	7	Engineering Institute	Thomas GK Technical Research Institute Co., Ltd.	Research, development, design, and sales of environmentally-conscious incinerators	Oct. 2013
	8	Manufacturing	Japan Food and Culture Kakehashi Company Co., Ltd.	Manufacturing and sales of processed products derived from domestic agriculture, forests, and marine resources	Jan. 2015
	9	Manufacturing	Kawashima Group Co., Ltd.	Manufacturing of healthy food	Jul. 2015
	10	Manufacturing	SKAN JAPAN Co., Ltd.	Manufacturing and sales of pharmaceutical manufacturing machines (isolators)	Mar. 2016
	11	Special real estate leasing	Ryukyu Kaiun Kaisha Sea Transport Company Co., Ltd.	Operation of a 3-temperature zone distributio center	Mar. 2017
		Warehouse	Ryukkai Logistics Co., Ltd.	Operation of a 3-temperature zone distributio center	
	12	Manufacturing	BEAC Okinawa Co., Ltd.	Manufacturing equipment for manufacturing, electronic components (flexible printed circuit, boards)	Mar. 2017
	13	Wholesale	Kobelco Construction Machinery Japan Co., Ltd.	Sales and maintenance of new/used cars for civil engineering and construction	Mar. 2017
	14	Manufacturing	FMD Co., Ltd. (Okinawa Factory)	Manufacturing of guide wires for endovascular treatment	May 2017
	15	Manufacturing	INOAC Ryukyu Co., Ltd.	Manufacturing of urethane foam (bedding, furniture, industrial materials, etc.) and related products	Sep. 2017
	16	Electricity industry	Okinawa Uruma New Energy Co., Ltd.	Operations of biomass power plants	Oct. 2017
	17	Wholesale	Suzuki Jihan Automobiles Okinawa Co., Ltd.	Vehicle storage yard and vehicle delivery/maintenance (commercialization plant)	Nov. 2017
	18	Special real estate leasing	Yoshikawa Transport Co., Ltd.	Sales warehouse rentals	Feb. 2017
		Warehouse	Maruyama Logistics Co., Ltd.	Operation of a sales warehouse	Feb. 2017
	19	Manufacturing	MIZUTOMI Corporation	Manufacturing of food products (meat, etc.)	Jan. 2018
	20	Road freight transport industry	Okinawa Total Logistics Co., Ltd.	Road freight transport for materials and machine tools, manufacture of reinforced corrugated fiberboards for packaging, and provision of painting services using large printers	Mar. 2018
	21	Manufacturing	Yashio Kenzaikogyo Industries Co., Ltd.	Manufacturing of metal products for construction	Apr. 2018
	22	Wholesale	Seawide Co., Ltd.	Building materials wholesale	Jul. 2018
	23	Manufacturing	Bijuu Co., Ltd.	Manufacturing of confectionery products and contract manufacturing	Aug. 2018
	24	Manufacturing	South Product Co., Ltd.	Manufacturing of fucoidan and health foods	Aug. 2018
	25	Manufacturing	ADO Co., Ltd.	Manufacturing of solenoid valves and flow sensors for equipment used in medical/enviromental analysis	Jan. 2019
	26	Manufacturing	Tiger Global Co., Ltd.	Manufacturing of metalworking products, rotary penetration steel piles (TG piles), and recycled plastic products	Jun. 2019
	27	Warehouse	OTK Co., Ltd.	Operation of a sales warehouse	Mar. 2020
	28	Wholesale	ArnestWing K.K.	Architectural and civil engineering work; building materials wholesale business	Feb. 2021
	29	Warehouse	C&D Inc.	Work related to purchasing, management, and transport of imported furniture, etc.	Feb. 2021
	30	Manufacturing	Sho Setsubi Co., Ltd.	Manufacturing of equipment units	Apr. 2021
	31	Manufacturing	Sanko Co., Ltd.	Manufacturing of plastic materials handling equipment	Mar. 2022
32	Manufacturing	ASKA Co., Ltd.	Design, manufacturing, and export of equipment for automated assembly lines of automotive parts	Mar. 2022	
33	Wholesale	Kinko Heavy Machinery	Wholesale of construction and mining machinery	Mar. 2022	

# 8 New industrial sites in Okinawa Prefecture

## (1) Nakamine & Uezu Districts in Uruma City

### Overview & Location

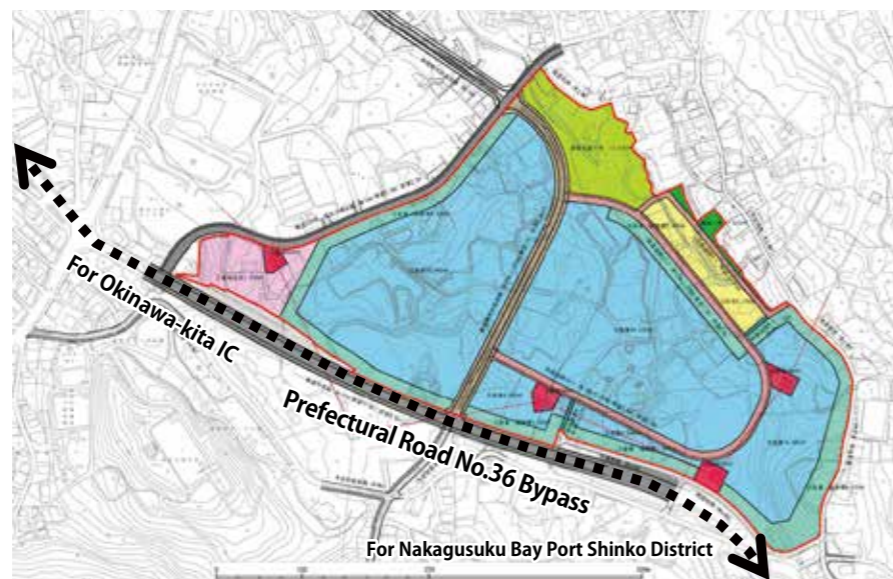
Uruma City is developing plans for a new industrial zone to secure additional employment opportunities for the population and land for industrial clusters. At the moment, the Nakamine & Uezu districts have been selected as candidate sites as they are poised to become the drivers of economic development and expected to share industrial functions with the Nakagusuku Harbor Shinko District. Surveys and studies aimed at establishing fundamental infrastructure there is currently underway.



### Development Diagram (draft)

Legends		
Construction area	196,300㎡	
Main road	7,040㎡	
District road	8,930㎡	
Special road	290㎡	
Park	11,430㎡	
Green space	1,510㎡	
Housing area	6,170㎡	
Community interaction area	7,670㎡	
Industrial area	123,740㎡	
Industrial area: Buffer zone W=15m	26,380㎡	
Steel tower & high-voltage cable	3,140㎡	

\*The above legends are examples only and may change.



### Planned schedule

Project schedule	2021	2022	2023	2024	2025	After
Company invitation	Company invitation activities					Handing over to companies in advanced districts
Development plan & project	Project survey & basic design		Project plan & implementation plan	Project approval & coordination for replanning	Infrastructure development (advanced districts)	Infrastructure development

\* All these initiatives and schedules are the tentative and have not yet been finalized. (as of December 2023)

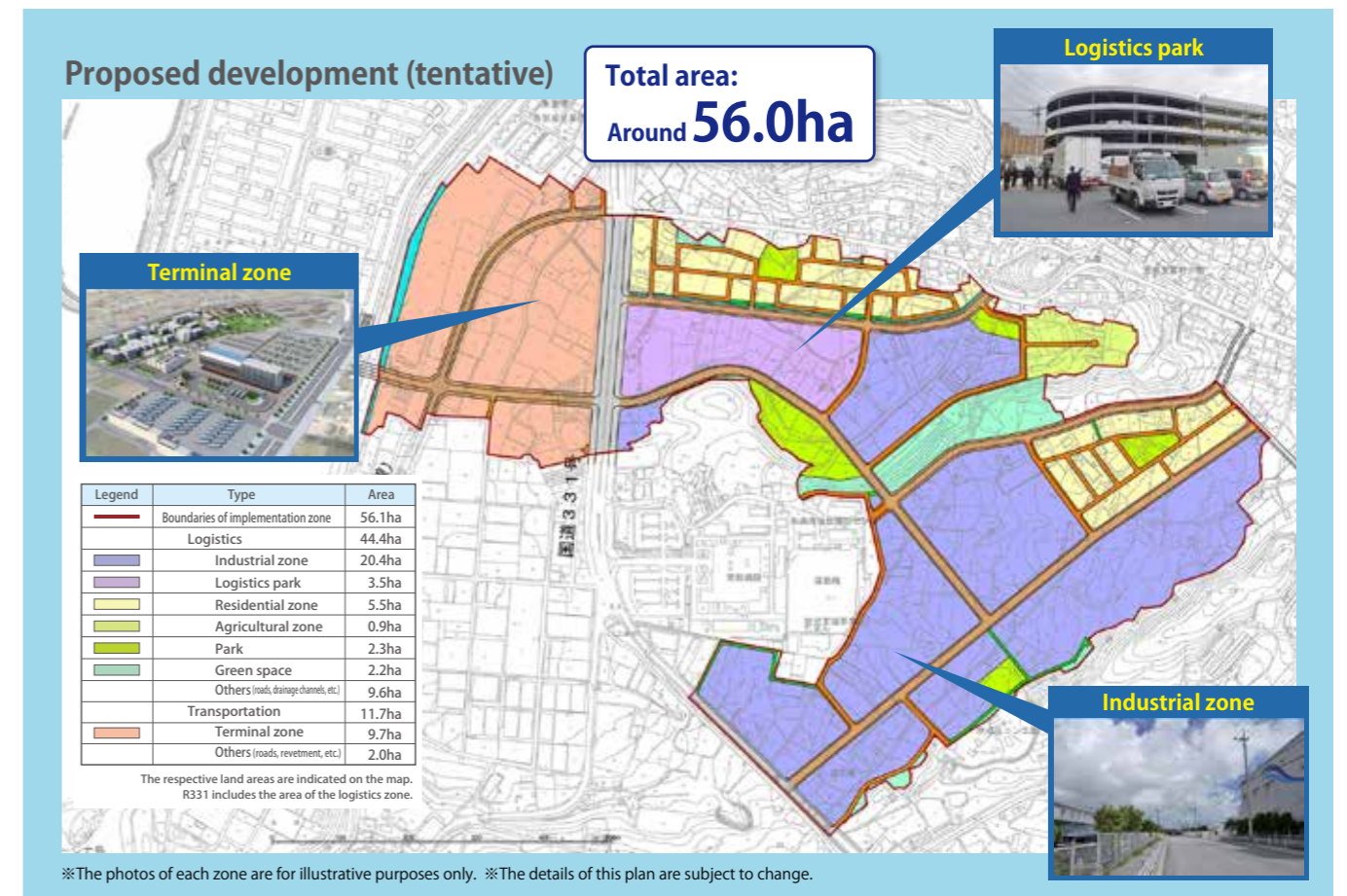
■ About attracting businesses/Section: Industrial Policy Department, Economic and Industrial Affairs Division, Uruma City Office TEL: 098-923-7611  
 ■ About Infrastructure Planning & Infrastructure Development /Section: Planning Department, Project Promotion Section 1, Uruma City Office TEL: 098-973-5373

## (2) Maezato District, Itoman City

### Overview and Location Map

The planning area is located about 15 minutes (10.4km) by car from Naha Airport, and the northwest part of the area is adjacent to the existing urban area. National Route 331 Itoman Road runs through it, providing convenient transportation access.

Location	Distance
Naha Port	Around 20 minutes (12.6km)
Naha Airport IC	Around 15 minutes (10.4km)
Tomigusuku IC	Around 19 minutes (9.1km)
Tomigusuku/Nakachi IC	Around 13 minutes (8.6km)
Prospective Toyosaki Industrial Site	Around 6 minutes (4.1km)
Itoman Industrial Park	Around 5 minutes (3.1km)
Itoman City Hall	Around 3 minutes (1.0km)



### Planned schedule

Project details	2021	2022	2023	2024	2025	2026	2027	2028
District development project approval				Approval				
Construction								
Sale					Schedule for the public offering for application <sup>1</sup>			Sale

\*The above schedule may be subject to change.

\*1. Scheduled to sell sequentially from the terminal zone, logistic park, and industrial zone.

■ About attracting businesses/Section: Economic Department, Commerce, Industry, and Fisheries Division, Itoman City Office TEL: 098-840-8137  
 ■ About planning and scheduling /Section: Construction Department, Rezoning Division, Itoman City Office TEL: 098-840-8144

### (3) Tomoyose-Higashi area, Yaese Town

#### ■ Overview and map of location

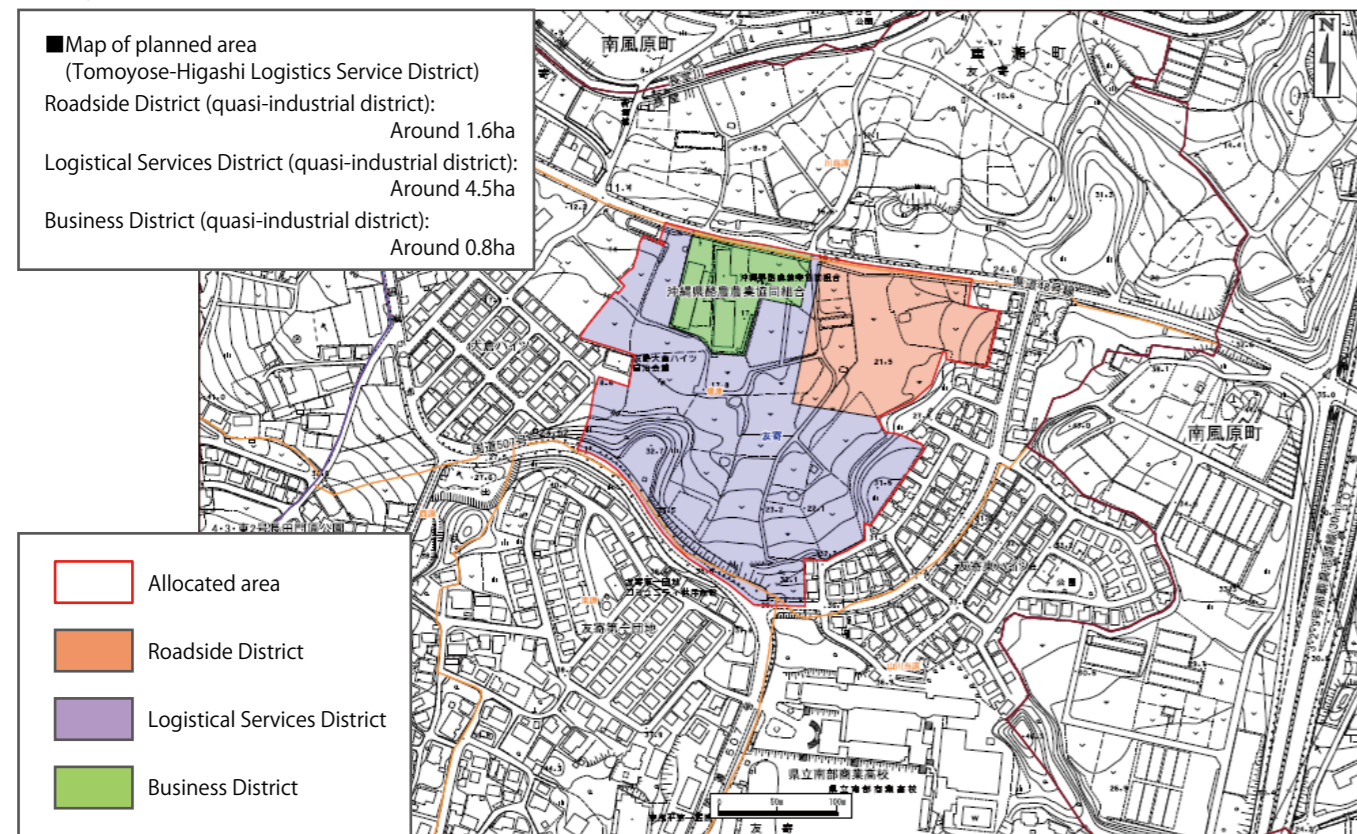
Located next to Prefectural Route 48 and near many major roads including the Naha Airport Expressway (Haeburu-Minami Interchange) and National Highway No. 507, this area in the northeast of Yaese Town couldn't be more conveniently located.

To get the most out of this prime land and vitalize Yaese Town, measures are underway to attract operators of commercial buildings such as retail stores, industrial facilities such as logistics hubs and warehouses, and business facilities such as offices.



● 2 minutes by car (around 1km) to Haeburu-Minami Interchange

#### ■ Layout (tentative)



#### ■ Planned schedule

Work	2022	2023	2024	2025	2026	2027	2028
Recruitment of companies	Recruitment of companies/application process						
Development plan	Decision of urban planning	Surveying/measurement/design/project planning/application for permits for development, etc./building of foundations					

\*The above schedule is correct at present but has not been finalized. (As of January 2023)

■ Inquiries about recruitment of companies: Planning and Finance Division, General Affairs Department, Yaese Town Hall (TEL 098-998-2668)

■ Inquiries about urban planning: Urban Development Division, Economic Affairs and Construction Department, Yaese Town Hall (TEL 098-998-6989)

## 9 Comments from companies that have expanded into Okinawa Prefecture



### I-PEX Inc.

○Industry type: Electronic component manufacturing

○Expansion into Okinawa: February 2019 ○Location: Tomigusuku City, Uruma City

Q1. What led to I-PEX expanding into Okinawa?

We opened our International Management Office Administration Headquarters in Tomigusuku City in February 2019 to provide support for our overseas sales staff and 17 international companies. In May of the same year, we established "the I-PEX Global Operations, Inc." In January 2020, we opened a factory at the Okinawa Machine Parts and Tooling Industries Promotion Facility in Uruma City. In December 2022, we opened the Okinawa Innovation Center, our third site.

Q2. Why did you choose Okinawa?

We chose Okinawa because it has a well-developed logistics and air transport network because of its tourism and a large number of multilingual personnel proficient in English and Chinese. There are also many industrial education institutions producing 3,000 prospective engineers every year, which gives us an advantage in securing young, talented personnel.

Q3. What message would you give to companies who are considering setting up in Okinawa?

The Okinawa prefectural government and the Japanese government's Okinawa General Bureau provide extensive support to promote the manufacturing industry, and there are various advantages for companies that take on new initiatives. There are opportunities to connect with companies in the prefecture and great potential for new discoveries and fresh business ideas.



### FMD Co., Ltd

○Industry type: Medical devices

○Expansion into Okinawa: February 2018 ○Location: Uruma City

Q1. What led to FMD expanding into Okinawa?

Producing guidewires requires a large workforce, so securing personnel is essential for business expansion. However, we could not hire as many people as we wanted at our existing sites, and we were considering expanding to include overseas locations. In 2016, we attended a seminar to attract companies to Okinawa and decided to establish a site here because there are a lot of young workers here and it's a good location from the perspective of BCP.

Q2. Why did you choose Okinawa?

We chose Okinawa because of how easy it is to hire young talent, its incentive program and its proximity to other Asian countries. With markets expanding into Southeast Asia and China, the former Special Free Trade Zone of Uruma City, where we established our Okinawa site, was an excellent base for overseas exports.

Q3. What initiatives do you want to pursue in the future at your Okinawa location?

Part of our production process is currently carried out at our Aichi factory, so we plan to expand our Okinawa site so that in future we can do all of our production at our Okinawa factory.



### NanoSystem Solutions, Inc.

○Industry type: Semiconductor manufacturing equipment

○Expansion into Okinawa: April 2015 ○Location: Uruma City

Q1. What led to NanoSystem Solutions expanding into Okinawa?

When we started developing laser processing systems, we moved our head office here from Tokyo using the Okinawa New Industry R&D Support Project. Our customers are located mainly in Kyushu, Taiwan, China and other parts of Asia. In Okinawa, we have a geographical advantage that allows us to offer services and support to customers from Japan and overseas in the same way as if we were providing it from the Tokyo metropolitan area.

Q2. Why did you choose Okinawa?

Okinawa has an ideal environment for startups. They offer factories for rent, capital loan schemes, business grants, and transportation subsidies. The Okinawa prefectural government reached out to startups with business plans that were not attracting attention in metropolitan areas.

Q3. What message would you give to companies who are considering setting up in Okinawa?

The climate is consistent without much variance in temperature throughout the year, which helps to keep cleanroom operating costs low and makes it easy to schedule production and shipments. Okinawa is also a well-known area, which adds to our appeal among customers throughout Asia.

# 10 An aviation-related business cluster focused on maintenance, the first in Japan.

## (1) Initiatives for the Creation of an Aviation-related Industry Cluster

Okinawa Prefecture aims to create an aviation-related industry cluster centered on the first domestic aircraft maintenance business, leveraging its advantages such as proximity to Asia, which is expected to see increased demand for air transportation as a result of global economic growth. As the first step of these efforts, Okinawa Prefecture established an aircraft maintenance facility at Naha Airport which will serve as the starting point for the aviation-related industry cluster. MRO Japan Co., Ltd. has moved into this facility, and as a core company of the aviation-related industry cluster, it is expected to bring economic and employment benefits.



Maintenance of aircraft (Large dock inside the aircraft maintenance facility, MRO Japan Co., Ltd.)



Okinawa Prefecture Aviation-Related Industry Cluster

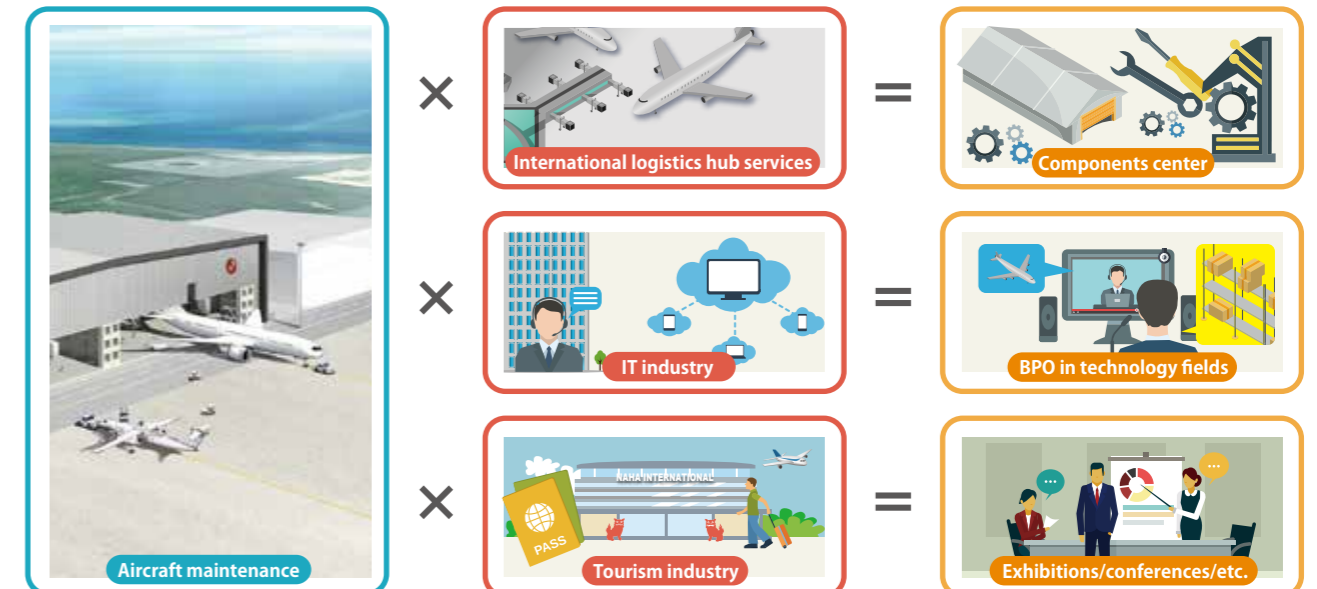
Diverse demand deriving from aircraft maintenance is anticipated, including for maintenance of equipment and engines used on aircraft, etc., storage and distribution of parts, maintenance-related consulting, research and development, and training of personnel engaging in aviation-related industries, etc. To meet this foreign and domestic demand, Okinawa Prefecture is working to recruit companies and train personnel based on its action plan for establishing an aviation-related industry cluster.



## (2) Aviation-related businesses leverage Okinawa's strengths

Okinawa offers a variety of advantages to companies doing business there, including tax incentives in the international logistics industry zone, proximity to the center of demand in Asia, and an abundant workforce. Furthermore, companies can expect to take advantage of Naha Airport's function as an international logistics hub, as well as partnerships with IT companies clustering in the area, etc.

### Examples of Coordination with Existing Industry

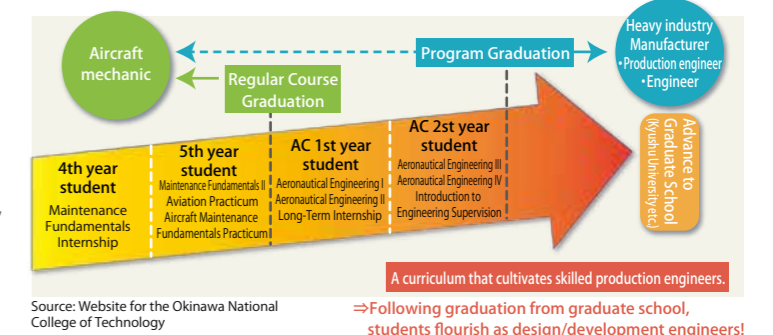


## (3) About Aviation-related Personnel Training Initiatives in Okinawa

The National Institute of Technology, Okinawa College established an Aviation Engineer Program in 2015, and is working to educate talent capable of contributing to aviation-related industries. As of March 2020, 61 individuals have completed the course and secured employment with aviation companies or companies specializing in engine design and aircraft maintenance, etc.

Additionally, there have been cases of graduates of Okinawa universities, technical high schools, and regular high schools securing employment with maintenance companies.

### Outline of Aviation Engineering Program



Source: Website for the Okinawa National College of Technology

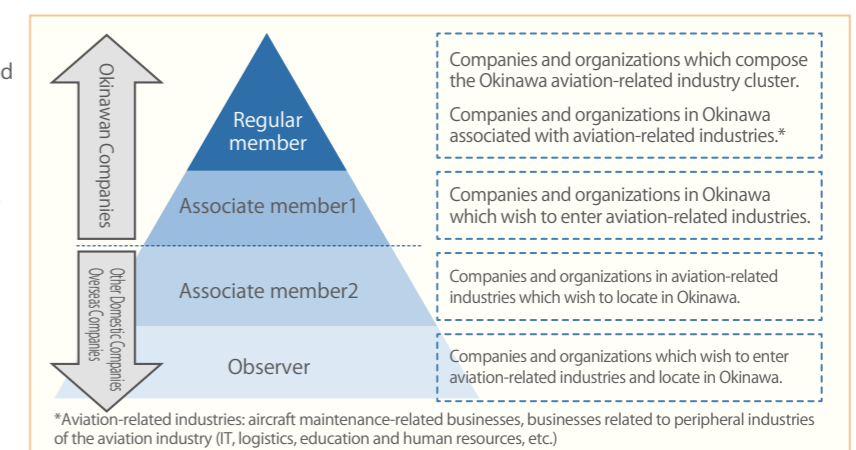
## (4) About the Okinawa Aviation Industry Cluster Promotion Association

Okinawa Prefecture collaborated with foreign and domestic companies to found the Okinawa Aviation Industry Cluster Promotion Association with the goal of promoting aviation-related industries in order to create a cluster with a concentration of aviation-related industries, including peripheral industries, centered on aircraft maintenance, and began recruiting members in October 2019. 23 members have participated as of the end of March 2024.

[Initiatives]

- Disseminating information via digital newsletters and websites, etc.
- Efforts to facilitate improvements in productivity and competitiveness through collaboration by companies
- Publicity and promotional activities to encourage development of sales channels
- Initiatives to train and secure personnel required by aviation-related industries
- Encouraging companies entering aviation-related industries

Joining this association is free of charge. For details on applying and registered members, please refer to the website on the right (see QR Code).



# 11 The IT industry in Okinawa



ResorTech Okinawa is a suite of initiatives in Okinawa for social and economic DX to contribute to the realization of a digital society. It spearheads various measures, including the promotion of collaboration between IT and other industries.

## Website

This website provides useful information for companies seeking to digitalize or adopt DX, including examples of cutting-edge projects in Okinawa and details on support and events.



## ResorTech EXPO in Okinawa Largest IT & DX Trade Fair in Okinawa

It's an international trade fair with participation by many companies from both inside and outside of Okinawa, and from overseas designed to exhibit solutions, hold business matching meetings, DX-related seminars, and many other programs.

- Participating companies 208 companies and organizations
  - Visitors (including online visitors) 14,662 persons
  - Sponsors 40 organizations
  - Reverse business negotiations 62 cases
- Medium- and small-size companies, local governments, and industrial organizations have received suggestions from companies that exhibited in the trade fair!



**Next time** **2024.11.14. THU** >>> **15. FRI** **Okinawa Arena**

ResorTech EXPO in Okinawa Executive Committee Secretariat (At the IT Innovation and Strategy Center Okinawa) [resortech@isc-okinawa.org](mailto:resortech@isc-okinawa.org)



Industlink, our service for connecting other industries with Okinawa-based IT companies, provides companies with support for implementing DX, including researching and comparing IT solutions to solve issues faced by the company. You can also request a consultation through the Industlink website.

Industlink connects companies facing issues with IT solutions providers who can solve them.

Industlink's office provides free consultations for business operators who have concerns!

If you have any concerns about adopting IT, get in touch!

## ICT Industry Support Guide

Here you can find helpful information for starting an IT or digital-related business or setting up a new site here, including Okinawa's support systems and extensive infrastructure that supports IT business and industry DX.

# 12 Okinawa's energy policy for creating a carbon-free society by FY2050

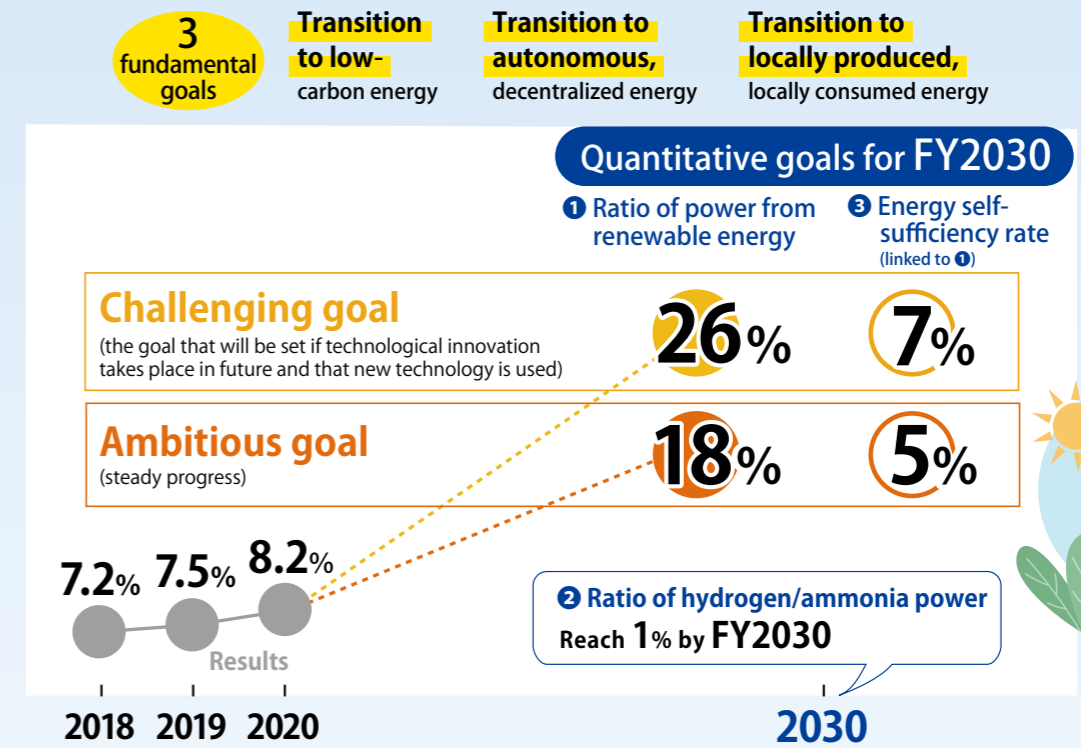
To play its part in building a carbon-free society in FY2050, Okinawa will promote the expansion of clean energy facilities while encouraging the use of special taxation such as the Industrial Innovation Promotion Zone System (see page 21 of the Industrial Location Guidebook).

## Okinawa Prefectural Clean Energy Initiative

Established March 2021 (amended March 2022) \*Okinawa Prefectural Energy Plan

### Future vision for FY2030

"An Okinawan island energy society with low carbon emissions and resilience against disasters"



### Action plan (implementation of specific measures) \*Excerpt describing main initiatives

Key projects (measures being taken with the aim of achieving goals for FY2030)	Challenging projects (experimentation for implementation of future technologies)
<ul style="list-style-type: none"> <li>1 Introduction of renewable energy across a wider area</li> <li>2 Expansion of locally consumed renewable energy</li> <li>3 Wider use of natural gas</li> <li>4 Further popularization of EVs</li> </ul>	<ul style="list-style-type: none"> <li>1 Use of next-generation energy sources (hydrogen, ammonia, etc.)</li> <li>2 Promotion of development of alternative energy sources such as marine renewable energy</li> <li>3 Creation of smart cities</li> </ul>

**Inquiries** Industrial Policy Division TEL 098-866-2330 FAX 098-866-2440

\*Source: Brochure by Industrial Policy Division, Okinawa Prefectural Government (FY2022 edition)

# 13 Okinawa Prefecture's bio industry

## Building a world-class glocal community

### Okinawa Biocommunity



#### Okinawa's strengths

#### Certification

#### Cooperation

○As the only prefecture in Japan with a subtropical oceanic climate, Okinawa has among the greatest biodiversity in Japan, particularly in marine life, providing an abundance of resources for the bio industry.

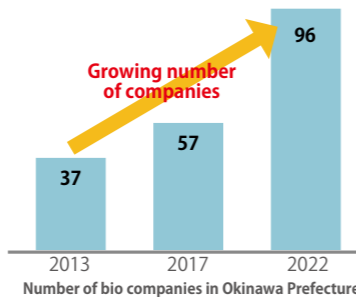
○In December 2022, Designated by the Japanese government as a Regional Bio-Community in recognition of its global importance in the bio realm due to its abundant bio resources and its physical location, which is suited as an Asian hub.

○Okinawa Prefecture's biocommunity works together with major Japanese bio organizations, including global biocommunities such as BioCK (Biocommunity Kansai) and GTB (Greater Tokyo Biocommunity), to provide support for research, technology and product development, along with information sharing and matching services.

### Incubation facilities

○Incubation facilities such as Okinawa Health Biotechnology Research & Development Center and Okinawa Biotechnology Business Support Center carry out cutting-edge research and development using biotechnology.

Inquiries: Okinawa BioCommunity office  
TEL: 098-982-1100  
Website: <https://okibic.jp/>



Okinawa Health Biotechnology Research & Development Center

## Initiatives to promote bio industry

### Support and personnel development for research, development, commercialization, etc.

Inquiries: Manufacturing Promotion Division, Department of Commerce, Industry and Labor  
TEL: 098-866-2337

#### Research, development and business support

#### ○Initiatives to promote commercialization in the bio industry

Support (subsidies) for research and development by current and prospective bio companies

#### ○Bio-Related Industry Promotion Support Project

Support for matching through bio communities and solving problems (fund procurement, sales route discovery, etc.)

#### Development of advanced personnel for the bio field

#### ○Health and Medical data science personnel training project

Bio-Informatics personnel training program (29 classes in 2023) was provided to cultivate individuals capable of actively participating in drug discovery, commercialization of health food, and many other fields. Target: Working adults, researchers, and students in Okinawa Prefecture

#### Bio-informatics personnel training courses

#### Introductory course

Data processing and statistics analyses using Excel

#### Intermediate course

Learn about cases and applied technology of bio-informatics

#### Advanced course

Life sciences, information sciences, bio-informatics

### Health foods

Inquiries: Okinawa Prefecture Health Industry Association  
TEL: 098-975-6230  
Website: <http://www.kenshoku-oki.com/>

#### ○Platform to support companies in strengthening their brand power

This platform helps health food companies in Okinawa to find strategic, cross-sectional solutions to issues they face in areas such as functionality research, marketing, product development and exploring sales routes.

#### WELLNESS OKINAWA JAPAN (WOJ): A proprietary certification system



To qualify for this certification, the certifying body must be satisfied that the product has functional value, is safe, and possesses emotional value unique to Okinawa.

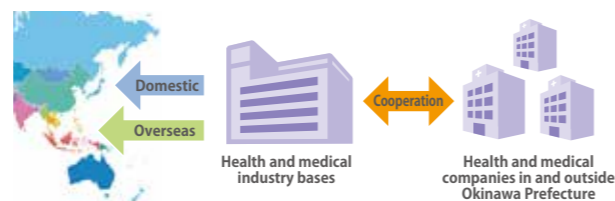


### Building an industry hub centering on the health and medical fields

Inquiries: Manufacturing Promotion Division, Department of Commerce, Industry and Labor  
TEL: 098-866-2337

○Located centrally among East Asia countries with its own airport, Okinawa is a prime hub for cutting-edge medical businesses such as regenerative medicine, and has the potential to become a bio-hub for the health and medical fields.

○Okinawa Prefecture is working to build an industry hub centering on the health and medical fields to meet potential future demand.



# 14 Research Institutes in Okinawa

Okinawan research institutes such as the Okinawa Industrial Technology Center and the Okinawa Biotechnology Business Support Center are located in the Uruma/Okinawa district, an international logistics hub. Various other research institutes are located within the University of the Ryukyus, which is within a 30-minute drive. We support businesses in the area through applied research, human resources training, and the provisions of scientific and technological information based on an organic collaboration with the institutions.

	Name	Location	Main Business or Area of Research	TEL	QR
Okinawa	Okinawa Industrial Technology Center	Uruma City	Providing various technical services to support the resolution of technical issues and product development for companies located in Okinawa. Conducts experimental research for chemistry, food, ceramics, and machinery and metals.	098-929-0111	
	Okinawa Mold Technology Institute		Trains engineers, provides equipment, and conducts experimental research relating to molds	098-929-0280	
	Okinawa Health Biotechnology Research & Development Center		Incubation facility where companies can utilize research equipment to conduct bio health related research Helping to turn research results using biotechnology into businesses and products.	098-923-1768	
	Okinawa Biotechnology Business Support Center			098-934-8435	
	Okinawa Life Science Research Center		Conducts advanced research and development for pharmaceuticals and food with health-promoting benefits, utilizing the regional characteristics and biological resources of Okinawa(Satisfies physical containment (P2) safety requirements)	098-982-1060	
University of the Ryukyus	Molecular Life Science Research Facility	Nishihara Town	Functional Genomics; Molecular Biotechnology; Environmental and Biological Information; Vaccinology and Vaccine Immunology; and Molecular Microbiology	098-895-8943	
	Center for Research Advancement and Collaboration		Research and development, and collection and provision of information on analytics/measurement technologies	098-895-8967	
	University of the Ryukyus Center for the Promotion of Industry-Academic-Government Collaborations		The University of the Ryukyus research activities include supporting research and development with non-affiliated institutions outside the university, supporting the protection and utilization of intellectual property, and supporting enterprise.	098-895-8031 098-895-8597	

## Okinawa Institute of Science and Technology Graduate University (OIST)

The Okinawa Institute of Science and Technology Graduate University is a graduate university offering world-class research and educational standards in the field of natural sciences. It was established in November 2011, after receiving approval from the Ministry of Education, Culture, Sports, Science and Technology to establish an incorporated educational institution, and opened its doors in September 2012. For educational and research activities, interdisciplinary research projects that combine the fields of neuroscience, molecular, cellular, and developmental biology; mathematical and computational sciences; environmental and ecological sciences; physics; chemistry, and engineering and applied science are being carried out. It is anticipated that a cluster of intellectual industries will be formed around the facility by attracting corporate research institutes and venture companies.



## National Institute of Technology, Okinawa College

The National Institute of Technology, Okinawa College (NIT Okinawa) comprises four departments: Mechanical Systems Engineering, Information and Communications Systems Engineering, Media Information Engineering, and Bioresources Engineering. Through five years of consistent education, the college nurtures creative and practical engineers who can contribute to society with a highly humane, ethical, and international outlook in addition to expertise and technical training. With its solid educational system, NIT Okinawa is contributing to industrial growth in Okinawa through training programs and technology exchange/consultation opportunities in collaboration with local governments and industries.



### Details regarding incubation facilities, etc.



#### Okinawa Health Biotechnology Research & Development Center

The Okinawa Health Biotechnology Research & Development Center is an incubation facility that conducts research and development regarding health foods and pharmaceutical drugs, with the purpose of promoting industrial development in Okinawa.

Rental lab	Area (m <sup>2</sup> ):	20.32m <sup>2</sup> ~167.74m <sup>2</sup>	Inquiries:098-934-8435
	Rent (monthly):	¥2,160 per m <sup>2</sup>	Tenancy period: 5 years in principle
	Number of rooms:	16	

#### Main support

- Explanations on operating equipment, technical consultations
- Advice on development of health food products and technical elements of ingredient analysis
- Support for commercialization, advice on product development

#### Main machinery and instruments



Okinawa Health Biotechnology Research & Development Center offers a variety of equipment that organizations can use to carry out research and development or improve their production technology. (Tax exemption for machine usage fees available)

Analysis instruments	Nuclear magnetic resonance apparatus, liquid chromatography quadrupole mass spectrometer, gas chromatography-mass spectrometer, time-of-flight tandem mass spectrometer, DNA sequencer, amino acid analyzer, etc.
Proof-of-concept equipment	Jar fermenter (90L, 600L), disk-type centrifugal separator, sterilizer, powder sterilization device, coarse grinder, pneumatic pulverizer, fine grinder, low-temperature dryer, etc.



#### Okinawa Bio Industries Center

Okinawa Bio Industries Center is a post incubation facility that offers support to businesses that are approaching the commercialization of research development and research results made using biotechnology, and we aim to further develop biotechnology related industries in Okinawa.

Rental lab	Area (m <sup>2</sup> ):	34m <sup>2</sup> ~232m <sup>2</sup>	Inquiries:098-923-1768
	Rent (monthly):	¥2,400 per m <sup>2</sup>	Tenancy period: no limit
	Number of rooms:	31	

#### Main support

- Okinawa Bio Industries Center provides various forms of support through its industry-academia-government collaboration network.
- Advice from experts about matters such as practical use and exploration of sales routes

#### Use of equipment

Okinawa Health Biotechnology Research & Development Center has analysis equipment on site for organizations to use. (Organizations may be eligible for a fee reduction or exemption.)



#### Okinawa Life Science Research Center

The Okinawa Life Science Research Center is a rental lab with the purpose of promoting and industrializing Okinawan technology in bio/life sciences that coordinates research and development with venture enterprises and research institutions, that has is the first P2 level facility for commercialization in the prefecture.

Rental lab	Area (m <sup>2</sup> ):	60.75m <sup>2</sup> ~243m <sup>2</sup>	Inquiries:098-982-1060
	Rent (monthly):	¥2,404 per m <sup>2</sup>	Tenancy period: less than 1 year (renewable)
	Number of rooms:	16	

#### Main support

- Support for entrepreneurs
- Okinawa Life Science Research Center provides various forms of support for companies relocating to Okinawa, including support for entrepreneurs who have relocated to Okinawa, support for promotional activities, and matching with potential partners.
- Support for companies
- 25% reduction of room rate for small and medium enterprises that have been in business for less than five years. \*Conditions apply

#### Use of equipment

Automated incubators, thermostatic shaking incubators, high-speed refrigerated centrifuges, centrifugal evaporators, microchip electrophoresis equipment, quadrupole mass spectrometers, pulse field electrophoresis equipment, low pressure chromatography, digital PCR, next-generation sequencer systems, animal testing facilities (with individual animal breeding control units), etc.

### Details regarding incubation facilities, etc.



#### Okinawa Institute of Science And Technology Graduate University (OIST)

Okinawa Institute of Science And Technology Graduate University (hereinafter referred to as OIST) aims to contribute to Okinawa's autonomous development and improving global science and technology through the implementation of internationally exceptional education and research regarding science and technology. Their innovation square/incubator aims to be a facility where entrepreneurs from OIST and anywhere from both Japan and the world, can collaborate with preexisting businesses and investors, to help realize innovation and visions regarding the ecosystem.

#### Rental lab

Area (m <sup>2</sup> ):	20m <sup>2</sup> ~25m <sup>2</sup>
Rent (monthly):	¥7,080~84,000
*You can rent by room, or by desk or bench	
*Membership fees not included	
*Organizations must sign up for membership to use the equipment.	
Inquiries:	incubator-help@oist.jp

#### Facility/service fee list

Type	Monthly
Exclusive desk	¥ 7,080
Exclusive office (20m <sup>2</sup> )	¥ 51,200
Lab bench	¥ 22,200
Exclusive lab (25m <sup>2</sup> )	¥ 84,000
Membership fee (per individual)	¥ 2,500



OIST website

#### Shared facilities and equipment

- Shared research equipment (refrigerators, culturing equipment, centrifugal separators)
- Meeting rooms for up to 8 people (Zoom conference equipment, projector, screen)
- Event space for up to 25 people (40m<sup>2</sup>)
- Conference rooms in OIST Conference Center (Access to event space (additional usage fee applies))
- Wi-Fi, multifunction printers
- Soundproofed phone booths
- Shared kitchen
- Parking area

#### Services for members

- Access to members' and investors' network
- Participation in entrepreneur development events held by OIST
- Access to the café and convenience store on campus
- Access to OIST's shared equipment (additional usage fee applies)
- Registration
- Posting on OIST website
- Access to experts for patenting, funding and staffing



#### University of the Ryukyus Center for the Promotion of Industry-Academic-Government Collaborations

University of the Ryukyus' research activities include support for research and development by outside organizations (such as those in the private sector), support for protection and use of intellectual property, and support for companies. The purpose of this work is to contribute to regional development and vitalization of the university's education, research and development activities.

#### Fees, etc.

- 1) Use of the building for industry-academia-government collaborations:
    - 1,570 yen per m<sup>2</sup> per month (including utilities)
    - Office area only: 11 rooms, 17-66m<sup>2</sup> Laboratories: 2 rooms, 10.5m<sup>2</sup>, 21m<sup>2</sup>
  - 2) General regional revitalization research building:
    - 1,620 yen per m<sup>2</sup> per month (excluding utilities)
    - Office area only: 11 rooms, 21-42m<sup>2</sup> Laboratories: 2 rooms, 20m<sup>2</sup>, 41m<sup>2</sup>
- Both buildings are for industry-academia-government collaboration activities conducted at University of the Ryukyus, and are available for joint research between outside organizations such as private companies and faculty and other parties affiliated with the university (including students) or for application of research results.

\*Application period for FY2024 has closed.